

OCTOBER 2022 - SEPTEMBER 2023

# MS EUROPA 2

FREEDOM THAT TAKES YOU PLACES.



HAPAG <sup>18</sup>/<sub>91</sub> LLOYD  
CRUISES

<b>EUX2224</b>	From Piraeus (Athens) to Mahe (Seychelles)	01 Oct – 13 Oct 2022
<b>EUX2225</b>	From Mahe (Seychelles) to Cape Town	13 Oct – 28 Oct 2022
<b>EUX2226</b>	From Cape Town to Port Louis (Mauritius)	28 Oct – 10 Nov 2022
<b>EUX2227</b>	From Port Louis (Mauritius) to Mumbai	10 Nov – 24 Nov 2022
<b>EUX2228</b>	From Mumbai to Rangoon	24 Nov – 08 Dec 2022
<b>EUX2229</b>	From Rangoon to Benoa (Bali)	08 Dec – 20 Dec 2022
<b>EUX2300</b>	From Benoa (Bali) to Fiji	20 Dec 2022 – 06 Jan 2023
<b>EUX2301</b>	From Fiji to Auckland	06 Jan – 20 Jan 2023
<b>EUX2302</b>	From Auckland to Sydney	20 Jan – 07 Feb 2023
<b>EUX2303</b>	From Sydney to Benoa (Bali)	07 Feb – 23 Feb 2023
<b>EUX2304</b>	From Benoa (Bali) to Hong Kong	23 Feb – 10 Mar 2023
<b>EUX2305</b>	From Hong Kong to Tokyo	10 Mar – 27 Mar 2023
<b>EUX2306</b>	From Tokyo to Hong Kong	27 Mar – 12 Apr 2023
<b>EUX2307</b>	From Hong Kong to Laem Chabang (Bangkok)	12 Apr – 27 Apr 2023
<b>EUX2308</b>	From Laem Chabang (Bangkok) to Colombo (Sri Lanka)	27 Apr – 11 May 2023
<b>EUX2309</b>	From Colombo (Sri Lanka) to Limassol (Cyprus)	11 May – 22 May 2023
<b>EUX2310</b>	From Limassol (Cyprus) to Istanbul	22 May – 01 Jun 2023
<b>EUX2311</b>	From Istanbul to Piraeus (Athens)	01 Jun – 10 Jun 2023
<b>EUX2312</b>	From Piraeus (Athens) to Venice	10 Jun – 21 Jun 2023
<b>EUX2313</b>	From Venice to Civitavecchia (Rome)	21 Jun – 03 Jul 2023
<b>EUX2314</b>	From Civitavecchia (Rome) to Monte Carlo	03 Jul – 11 Jul 2023
<b>EUX2315</b>	From Monte Carlo to Barcelona*	11 Jul – 20 Jul 2023
<b>EUX2316</b>	From Barcelona* to Bilbao	20 Jul – 31 Jul 2023
<b>EUX2317</b>	From Bilbao to Hamburg	31 Jul – 11 Aug 2023
<b>EUX2318</b>	From Hamburg to St Petersburg	11 Aug – 20 Aug 2023
<b>EUX2319</b>	From St Petersburg to Kiel	20 Aug – 29 Aug 2023
<b>EUX2320</b>	From Kiel to Bergen	29 Aug – 06 Sep 2023
<b>EUX2321</b>	From Bergen to Hamburg	06 Sep – 15 Sep 2023
<b>EUX2322</b>	From Hamburg to Hamburg	15 Sep – 27 Sep 2023

\*The assignment of the ship's berth will be done after this brochure has been published. Adjustments can therefore not be excluded.

**LEGEND**

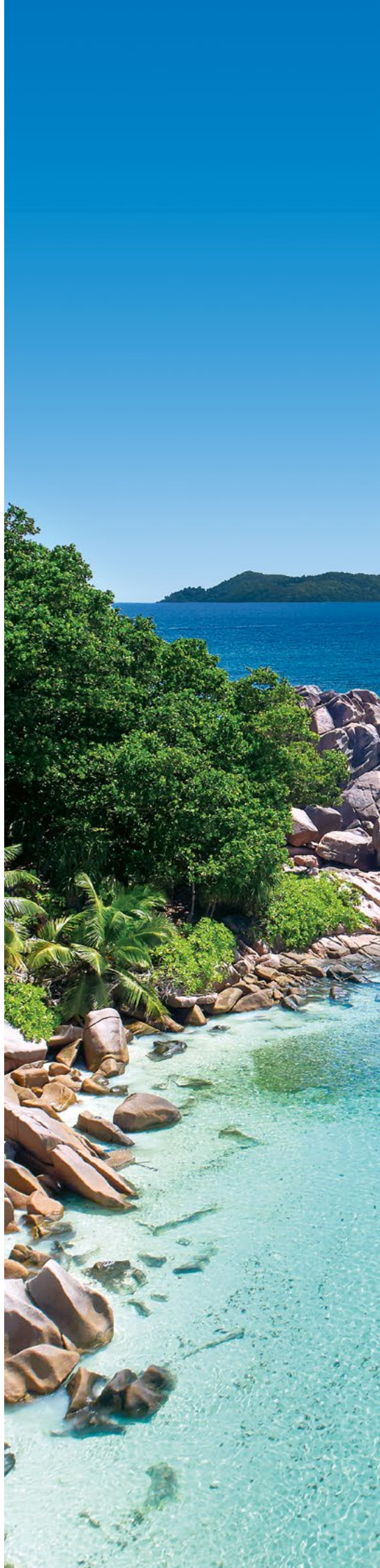
- Africa & Indian Ocean
- Asia
- Oceania
- Mediterranean
- Northern & Western Europe

**The fastest way to your cruise online.**

For further up-to-date information about a cruise – for example EUX2226 – visit [www.hl-cruises.com/eux2226](http://www.hl-cruises.com/eux2226). You can find the relevant cruise number and the itinerary in the table above.

**Do you have any questions?**

Feel free to get in touch by using our contact form at [www.hl-cruises.com/contact-form](http://www.hl-cruises.com/contact-form) or by sending us an email to [service@hl-cruises.com](mailto:service@hl-cruises.com)



## DEAR GUESTS,

Freedom That Takes You Places – this philosophy is part of every moment on the EUROPA 2. As unconstrained and individual as your lifestyle, as luxurious and stylish as you expect. Experience the symbiosis of elegance, aesthetics and perfection as the EUROPA 2 takes you to places that showcase the world at its most beautiful.

On a total of 29 cruises, the ship will set sail for coasts on four continents in 2022/2023, offering you exclusive cruise formats and the ultimate in casual luxury. Due to the high level of demand from our guests, the EUROPA 2 will once again visit multifaceted Japan, combined with a premiere: the EUROPA 2 will land in Tianjin for the first time, taking it as a starting point for a trip to the dazzling metropolis of Beijing. The Forbidden City, the Temple of Heaven, the Great Wall of China and Tiananmen Square are just a few of the sights that await you in the Chinese capital. Another highlight of the season is the fascinating Christmas cruise, which will take you from the dreamy island of Bali, via Australia, to the South Seas paradise of Fiji.

You are guaranteed to enjoy many unforgettable moments and the ultimate in relaxation on the best cruise ship in the world according to the Berlitz Cruise Guide 2020.

We look forward to welcoming you on board soon.



A handwritten signature in black ink that reads "Julian Pfitzner". The signature is fluid and cursive.

Julian Pfitzner  
CEO  
Hapag-Lloyd Cruises



**We're cleaning up our act!** By voluntarily foregoing heavy fuel oil completely, we are reducing sulphur emissions by 80 % and particulate emissions by 30 %. Since 2020, the entire fleet has instead been using marine gas oil with a maximum sulphur content of 0.1 %.

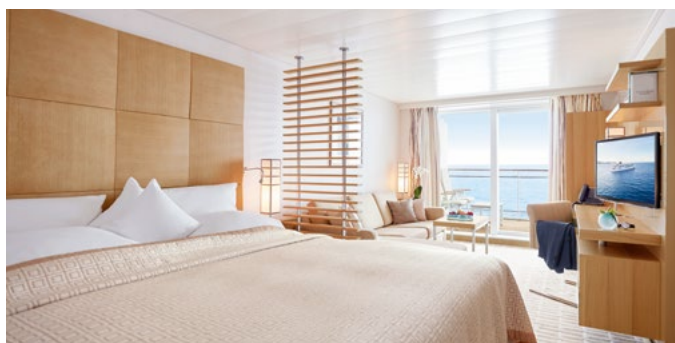


For further information and the latest EUROPA 2 film, visit: [www.hl-cruises.com/europa2](http://www.hl-cruises.com/europa2)



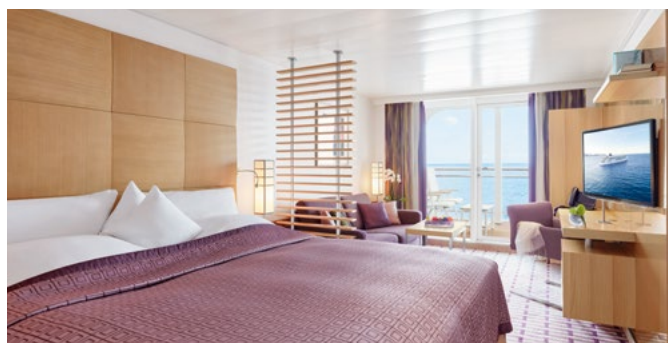
# IN THE MIDDLE OF THE OCEAN – YET STILL AT HOME.

The EUROPA 2 suites are modern and stylish retreats in which to enjoy private moments. Suites up to 114 m<sup>2</sup> (1,227 ft<sup>2</sup>) in size are available – naturally with their own veranda and a wonderful ocean view.



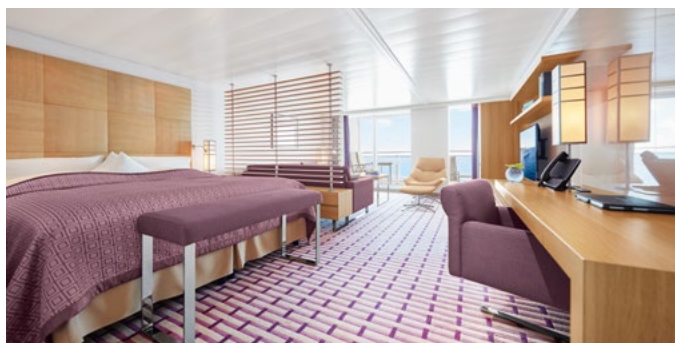
## VERANDA SUITE, 35 m<sup>2</sup> (376 ft<sup>2</sup>)

- Living area: 28 m<sup>2</sup> (301 ft<sup>2</sup>); veranda: 7 m<sup>2</sup> (75 ft<sup>2</sup>).
- Walk-in wardrobe.
- Exclusive living area with a chaise longue.
- Bathtub and separate shower.
- Free mini bar.



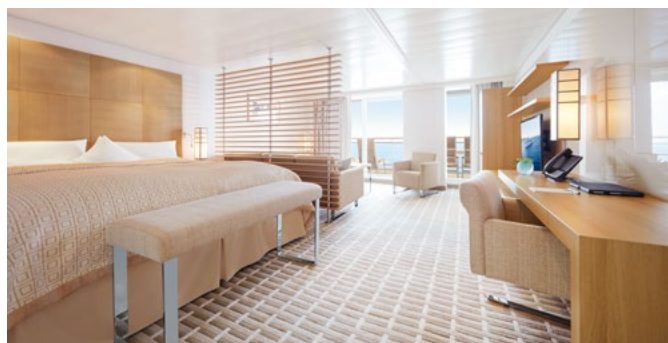
## OCEAN SUITE, 35 m<sup>2</sup> (376 ft<sup>2</sup>)

- Living area: 28 m<sup>2</sup> (301 ft<sup>2</sup>); veranda: 7 m<sup>2</sup> (75 ft<sup>2</sup>).
- Natural light in the bathroom.
- Bathroom with two sinks.
- Whirlpool tub and separate shower.
- Separate toilet.
- Free mini bar.



## GRAND OCEAN SUITE, 52 m<sup>2</sup> (560 ft<sup>2</sup>)

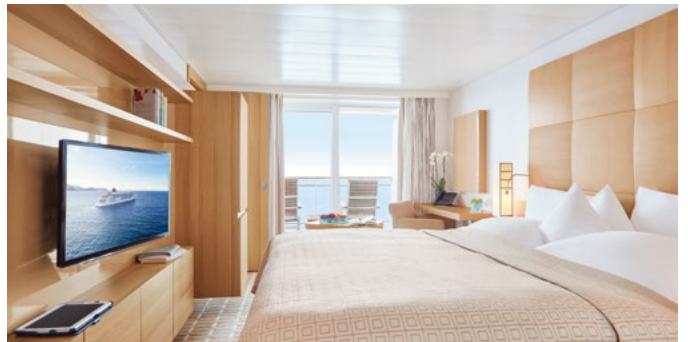
- Living area: 42 m<sup>2</sup> (452 ft<sup>2</sup>); veranda: 10 m<sup>2</sup> (108 ft<sup>2</sup>).
- Bathroom with two sinks.
- Separate toilet.
- Natural light in the bathroom.
- Shower with steam sauna.
- Whirlpool tub.
- Free mini bar.



## PENTHOUSE SUITE, 52 m<sup>2</sup> (560 ft<sup>2</sup>)

- Living area: 42 m<sup>2</sup> (452 ft<sup>2</sup>); veranda: 10 m<sup>2</sup> (108 ft<sup>2</sup>).
- Walk-in wardrobe.
- Bathroom with two sinks.
- Whirlpool tub and separate shower.
- Separate toilet.
- Butler service and free mini bar.

A Penthouse Suite with fully accessible facilities can also be booked. Here the toilet is in the bathroom.



### FAMILY APARTMENT, 2x 27 m<sup>2</sup> (2x 290 ft<sup>2</sup>)

- Living area: 2x 20 m<sup>2</sup> (2x 215 ft<sup>2</sup>); veranda: 14 m<sup>2</sup> (150 ft<sup>2</sup>), divisible into 2x 7 m<sup>2</sup> (2x 75 ft<sup>2</sup>).
- Connecting doors between the rooms and the verandas.
- Separate toilets.
- Free mini bars.

The furniture of one of the living areas has been tailored especially for our younger passengers:

- Two twin beds, one of which is a Pullman (80 × 200 cm [2.6 × 6.5 ft]).
- Bathtub (140 × 80 cm [4.6 × 2.6 ft]).
- Age-appropriate range of toys and games including a games console.



### GRAND PENTHOUSE SUITE, 88 m<sup>2</sup> (948 ft<sup>2</sup>)

- Living area: 78 m<sup>2</sup> (840 ft<sup>2</sup>); veranda: 10 m<sup>2</sup> (108 ft<sup>2</sup>).
- Separate living and sleeping areas.
- Separate dining table.
- Guest toilet.
- Bathroom with two sinks.
- Shower with steam sauna.
- Whirlpool and daybed in the bathroom.
- Butler service and free mini bar.
- Exclusive service privileges.

### OWNER SUITE, 114 m<sup>2</sup> (1,227 ft<sup>2</sup>)

- Living area: 99 m<sup>2</sup> (1,066 ft<sup>2</sup>); veranda: 15 m<sup>2</sup> (161 ft<sup>2</sup>).
- Separate living and sleeping areas.
- Separate dining table.
- Guest toilet.
- Bathroom with two sinks.
- Shower with steam sauna.
- Whirlpool and daybed in the bathroom.
- Butler service and free mini bar.
- Exclusive service privileges.

# DELICIOUS DINING IN ELEGANT SURROUNDINGS.

With an eye for detail, the EUROPA 2 chefs are constantly opening up new culinary horizons. They also offer a fine selection of artfully presented dishes at the highest level for those who prefer vegetarian cuisine.

## WELTMEERE



The flagship restaurant at the heart of the EUROPA 2: enjoy an international gourmet menu that changes every day, and embark on a culinary voyage of discovery.

## ELEMENTS



Whether Indian, Vietnamese or traditional Chinese dishes – Elements offers a feast for the senses of everyone with a penchant for the flavours of the East.

## SERENISSIMA



Exquisite classics and new interpretations of the flavours of the Italian Mediterranean: the Serenissima combines the best of Italy's flavours and lifestyle.

## SAKURA



Our sushi master has perfected the art of conjuring up small masterpieces from the finest ingredients. The result is exquisite sushi, with dishes ranging from classic to creative.

## TARRAGON & GRANDE RESERVE



Tarragon stands for great French cuisine and bistro classics, served in an art-deco-style setting. The neighbouring Grande Reserve focuses on fine wines, which you can taste under the direction of a sommelier (at a surcharge).

## YACHT CLUB

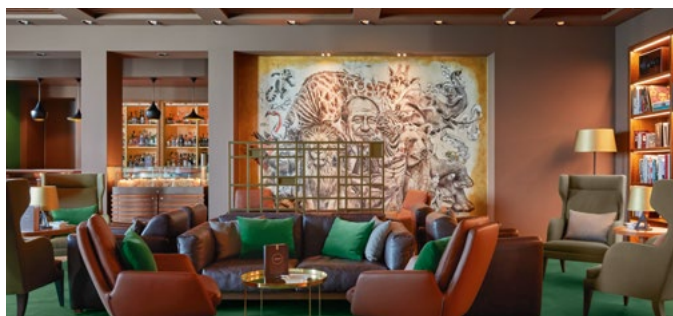


Relaxed enjoyment, also under an open sky: at the Yacht Club you can experience the finest cuisine and an unforgettable panoramic ocean view, from breakfast to dinner time.

# PLEASURE IS A MATTER OF STYLE.

Naturally, all six characteristic bars on board are full of style and charm. You can enjoy a unique ambience and excellent drinks in each of the stylish locations.

## COLLINS



The perfect backdrop for the perfect drink. The menu features Cuban specialities from the humidior, as well as the largest gin selection on the seven seas.

## BELVEDERE



Providing breathtaking panoramic views, the Belvedere is the ideal place to enjoy a little time out. But it's also an atmospheric lounge with a library, where select coffee and tea specialities are served.

## POOL BAR



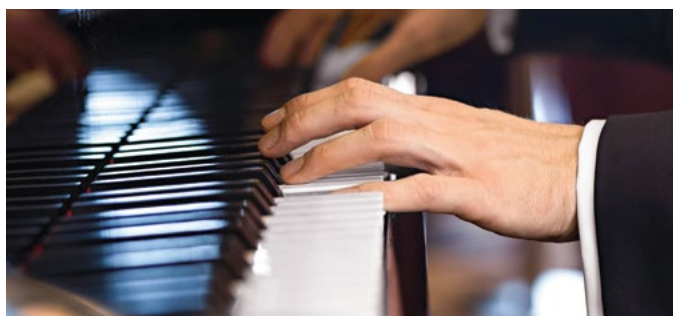
This relaxed meeting place on the Pool Deck serves snacks at breakfast and lunchtime, and our famous waffles in the afternoon, plus fresh juices and coffee specialities. It then takes on a laid-back atmosphere into the evening.

## CLUB 2



The Club 2 bar is a lively part of on-board nightlife and it's the place to be for discerning music fans, too. You can also enjoy comedy and cabaret here.

## PIANO BAR



The Piano Bar is modelled on the bars found in classic grand hotels: a place to sit back with a first-class drink while you reflect on the highlights of your day and enjoy music from the Steinway grand piano.

## SANSIBAR



The view from the open-air bar across the ocean and the parties on the dance floor are simply unforgettable. It's also a fantastic location for a late breakfast or a small bite to eat in the afternoon or evening.

# FROM DAY ONE.

The spa and fitness area of the EUROPA 2 is 1,000 m<sup>2</sup> (10,764 ft<sup>2</sup>) in size and has plenty of space for a modern fitness studio, saunas as well as professional cosmetic treatments and massages. More importantly, it has the luxury of plenty of space where you can breathe deeply and let go. This makes it the perfect place to find yourself.



## SPA AND WELLNESS

- COSMETIC TREATMENTS  
Exclusive and professional.
- MASSAGES  
From wellness to physiotherapy.
- PERSONAL SPA  
Private relaxation for couples.
- SAUNAS AND STEAM BATH  
Revitalising and cleansing.

## FITNESS AND GOLF

- CUSTOMISED PROGRAMMES  
For fitness and wellness.
- FITNESS CLASSES  
From aquafit to spinning.
- FITNESS STUDIO  
With personal training.
- GOLF  
Tee off on board and ashore.

# TRAVELLING WITH CERTAIN EXTRAS: THE SPECIAL TRAVEL FORMATS.

## TALK2CHRISTIANSEN | FASCINATING CONVERSATIONS



Sabine Christiansen, a German journalist, brings top-level guests on board for exciting discussions about the latest topics and current events.



## ART2SEA | THE PERFECT SETTING FOR ART



Set sail and discover the world of art – art2sea welcomes prominent artists, gallerists, art experts and curators from great museums.



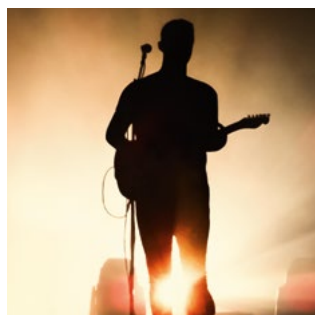
## MS EUROPA 2 UNPLUGGED® | GOOSEBUMPS INCLUDED



Swap large concert hall shows for an acoustic and personal experience with your star and enjoy exclusive encounters with outstanding musicians.



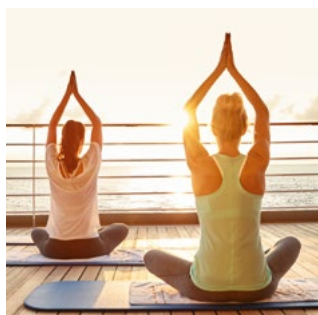
## MS EUROPA 2 UNPLUGGED® FESTIVAL | PURE ACOUSTICS



Experience a unique and diverse range of music and discover the stars of tomorrow.



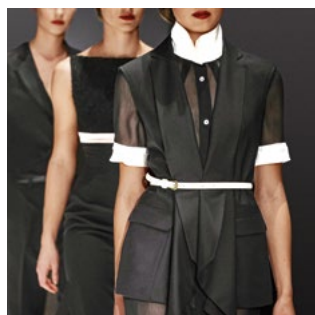
## IN2BALANCE | A JOURNEY TO FIND YOUR INNER BALANCE



Experience innovative training and relaxation in perfect harmony: the IN2BALANCE programme is like a soothing balm for body and soul.



## FASHION2SEA | FOR THE LOVE OF FASHION



Delve into the fascinating world of design and fashion on the fashion2sea cruise and be inspired as a renowned fashion designer gives an exclusive presentation of his new collection.



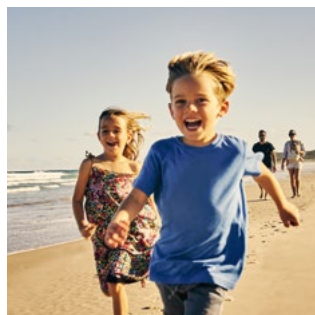
## GOLF & CRUISE | SETTING A COURSE FOR THE GOLF COURSE



Teeing off with an ocean view: travel to the most beautiful places on earth while enjoying a dream-come-true golfing holiday. Always on board: our PGA golf professionals.



## FAMILY CRUISES | FOR FANTASTIC HOLIDAYS



Family cruises are specially tailored to the requirements of children and their parents. As you'd expect they include a special programme on land and on board.



# YOUNG EXPLORERS, GREAT ADVENTURES.

While you enjoy a dream day, your children will become pirates, sandcastle engineers and karaoke champions. They will receive caring supervision tailored to their age as they build a pirate camp, take a banana boat tour or party at the pool. Relax in the knowledge that your children are always safe with us.



## KNOPF CLUB\*

- Great fun for children aged 2 to 3 years.
- Ball pit.
- Sensory wall.
- Steiff Cuddle Lounge.
- Childcare provided by experienced nannies.

## TEENS' CLUB

- A wide range of activities for 11- to 15-year olds, including parties, films, hip hop courses (on selected cruises) and specially designed teens' excursions\*\*.
- Wii games console, PlayStation, table football and table tennis.
- Chill-out area.

## KIDS' CLUB

- Discoveries for children aged 4 to 10 years.
- A perfect on-board environment with a building corner, research laboratory, computer corner, climbing castle and a children's library.
- Age-appropriate children's excursions\*\*.
- Childcare provided by experienced nannies.

## BABY WELCOME PACKAGE

- Available for children up to and including 3 years of age.
- Includes a selection of baby food and care products.
- Available in your suite: changing mat, travel cot and baby bath.
- Special services such as bottle sterilisation and on request a babysitter\*\* in the evening.

\*Childcare in the Knopf Club is subject to a surcharge and the number of participants is limited.

\*\*This service is not included in the cruise price.

# SPECIAL PERSPECTIVES ON THE WATER, ON LAND AND IN THE AIR.

The range of activities on the EUROPA 2 is almost endless. For example, snorkelling in the fascinating underwater world of the South Seas, going on a safari in the national parks of South Africa or cruising with local motorboats between the bizarrely shaped limestone cliffs of Halong Bay. What sets your heart racing? Naturally, you can also take it a little easier and explore cities and cultures with our experts.



## DISCOVER FREEDOM THAT TAKES YOU PLACES ASHORE AS WELL

Discover futuristic buildings, impressive temples and stunning natural paradises or simply savour some time for yourself. Our travel concierge's personal recommendations and the guided shore activities offer you a wide variety of options.

## TRAVEL CONCIERGE

Individual travel arrangements\*\*\* to suit your personal requirements and tips that cannot be found in any guidebook: our travel concierge makes it happen from a private buggy safari along picturesque coastlines to an exclusive discovery tour through glittering metropolises. For more information, visit [www.hl-cruises.com/travel-concierge](http://www.hl-cruises.com/travel-concierge)

## GUIDED SHORE EXCURSIONS

Our guided shore activities\*\*\* offer you a varied range of visits, discovery trips and active tours as a group, including cycling tours led by the professional EUROPA 2 bike guide.

You can find more information at [www.hl-cruises.com/ashore](http://www.hl-cruises.com/ashore) and at [www.hl-cruises.com/bikeguide](http://www.hl-cruises.com/bikeguide)

\*\*\*This service is not included in the cruise price.

## SUSTAINABILITY AND PREVENTION

# WE TAKE RESPONSIBILITY.

In order to ensure that the habitats on our planet are preserved in the future, a responsible approach to our environment is indispensable. That is why the EUROPA 2 even sails under the 5-star-plus flag when it comes to environmental protection. It is also important to us that we comply with the highest hygiene standards so that we can protect the health of everyone on board.

### ENVIRONMENTAL MANAGEMENT & COMMITMENT



Measures to increase our crews and our passengers environmental awareness for example, training courses, tours of the engine room and lectures by experts.



Hapag-Lloyd Cruises offers sustainable excursions that take place on foot, by bicycle or using forms of transport with low CO<sub>2</sub> emissions. Alternatively, you can reach nearby natural environments and tour starting points with just a short transfer.



As a member of AECO, we promote responsible, sustainable and safe tourism in the Arctic.



The TUI Care Foundation harnesses the positive impacts of tourism to make a difference for people and communities in holiday destinations around the world. We as Hapag-Lloyd Cruises and our guests support the TUI Care Foundation in its endeavours.



### CO<sub>2</sub> OFFSETTING



Offset the CO<sub>2</sub> emissions on your cruise: Hapag-Lloyd Cruises offers this in conjunction with the climate protection organisation myclimate. More information is available at [www.hl-cruises.com/climate-calculator](http://www.hl-cruises.com/climate-calculator)



### RESOURCE MANAGEMENT



Modern seawater desalination technology for the treatment of water, as well as environmentally friendly disposal of sewage sludge.



100 % self-produced water.



Certified biological sewage treatment plants clean all wastewater that is produced.



Eco-friendly waste separation prior to disposal on land in accordance with the MARPOL regulations.



Power management and decreased electricity consumption thanks to energy-saving light-bulbs and LEDs.



Ballast water management to ensure that flora and fauna are not carried into regions where they are not indigenous.



Hapag-Lloyd Cruises has been reducing unnecessary plastic on all its ships for many years already.



## EMISSION REDUCTIONS



By voluntarily foregoing heavy fuel oil completely, we are reducing sulphur emissions by 80 % and particulate emissions by 30 %. Since 2020, the entire fleet has instead been using marine gas oil with a maximum sulphur content of 0.1%.



Nitrogen oxide emissions reduced by 95 % thanks to SCR catalysts.



Below-average CO<sub>2</sub> emissions according to our EEDI certificate.



TBT-free underwater paint.



The bow thrusters and stabilisers run on environmentally friendly ecological oil.



The EUROPA 2 is equipped for cold ironing and makes use of this technology where possible.

## SAFETY AND PREVENTION CONCEPT



### KEEPING YOU SAFE.

The hygiene standards on board the EUROPA 2 are regularly verified by SGS INSTITUT FRESENIUS.  
[www.hl-cruises.com/travel-safety](http://www.hl-cruises.com/travel-safety)

## ENERGY EFFICIENCY



Reduced fuel consumption of around 30 % thanks to optimised route management and avoidance of top speeds.



Reduced fuel consumption thanks to the newly developed hull.

## RESPONSIBILITY AT OUR DESTINATIONS



Purchasing locally as a way of shortening our transport routes and supporting the local economy.

## ENVIRONMENTALLY COMPATIBLE PRODUCTION



For the printing of all advertising material, FSC®-certified paper is used and the CO<sub>2</sub> emissions are offset.



## FURTHER INFORMATION

Our Resource and Sustainability Management team will be happy to answer your questions by email at [sustainability@hl-cruises.com](mailto:sustainability@hl-cruises.com)



[www.hl-cruises.com/environment](http://www.hl-cruises.com/environment)

# A MATTER OF COURSE FOR US: THAT LITTLE BIT MORE SERVICE.

THE CRUISE PRICE (CRUISE ONLY) INCLUDES THE FOLLOWING, A. O.:

- Full board: breakfast, late risers breakfast, lunch and dinner, afternoon tea and coffee with pastries, midnight snack.
- 24-hour suite service.
- Champagne in your suite on the day you arrive.
- A mini bar in the suite with soft drinks and beer (refilled daily).
- A different entertainment programme every day with presentations, concerts, workshops and a high-quality evening programme, e.g. with live shows or readings.
- Free use of the on-board facilities and equipment, a.o. studio with region-specific presentations, library, sauna, fitness area, golf simulators, tablets, email and Internet (free of charge for one hour per guest per day; more information on Internet use at [www.hl-cruises.com/internet](http://www.hl-cruises.com/internet)), snorkelling equipment and bicycles (subject to official approval).
- TV with a wide range of entertainment and information options.
- Zodiac rides (depending on the route and weather conditions) and landings or rides in the ship's Zodiacs or tenders.
- Comprehensive EUROPA 2 cruise material with detailed country information, a document pouch, luggage tags and map material.
- German ship and cruise managers and a German- and English-speaking service crew with a travel concierge, guest relations manager, cruise sales, tour office, tour guides, etc.
- Harbour fees.
- Cancellation fee insurance.



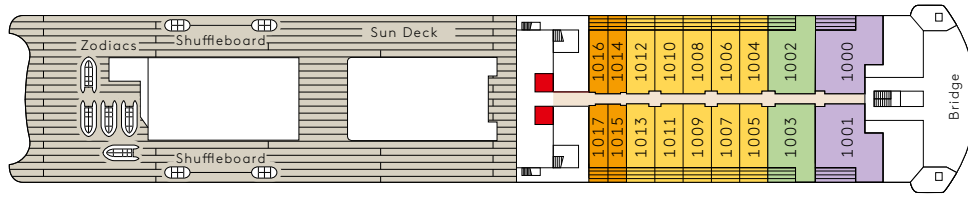
## TECHNICAL DATA.

<b>BUILT:</b>	2013	<b>SUITES:</b>	in total 251
<b>GROSS TONNAGE (GT):</b>	42,830		141 Veranda Suites including veranda at 35 m <sup>2</sup> (376 ft <sup>2</sup> )
<b>SHIPYARD:</b>	STX Europe, St-Nazaire, France		59 Ocean Suites including veranda at 35 m <sup>2</sup> (376 ft <sup>2</sup> )
<b>LENGTH:</b>	225.38 m (739.44 ft)		7 Family Apartments including veranda at 2x 27 m <sup>2</sup> (2x 290 ft <sup>2</sup> )
<b>BEAM:</b>	26.70 m (87.60 ft)		16 Grand Ocean Suites including veranda at 52 m <sup>2</sup> (560 ft <sup>2</sup> )
<b>DRAUGHT:</b>	6.30 m (20.67 ft)		24 Penthouse Suites* including veranda at 52 m <sup>2</sup> (560 ft <sup>2</sup> )
<b>TOTAL POWER:</b>	24,000 kW		2 Grand Penthouse Suites including veranda at 88 m <sup>2</sup> (948 ft <sup>2</sup> )
<b>SPEED:</b>	21 knots		2 Owner Suites including veranda at 114 m <sup>2</sup> (1,227 ft <sup>2</sup> )
<b>STABILISERS:</b>	Blohm + Voss, 2x 14 m <sup>2</sup> (2x 151 ft <sup>2</sup> ) wing area	<b>ON-BOARD LANGUAGES:</b>	German and English
<b>PASSENGER DECKS:</b>	7	<b>ZODIACS (MOTORISED INFLATABLE RUBBER BOATS):</b>	12
<b>PASSENGER CAPACITY:</b>	516	<b>TENDERS (150 SEATS):</b>	4
<b>CREW:</b>	> 370	<b>HOSPITAL:</b>	yes

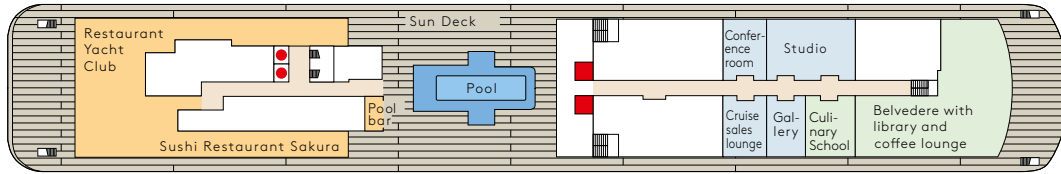
\*Two of these with fully accessible layout and equipment.

# OUR SUITES, YOUR CHOICE.

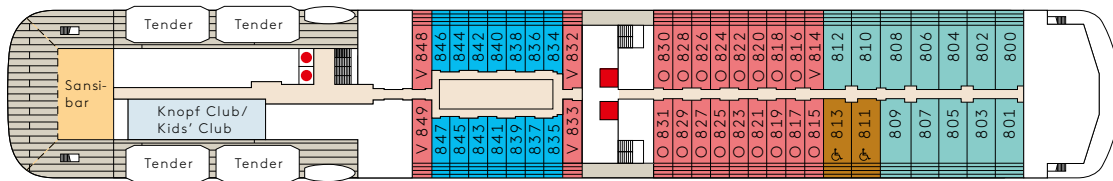
Deck 10



Deck 9

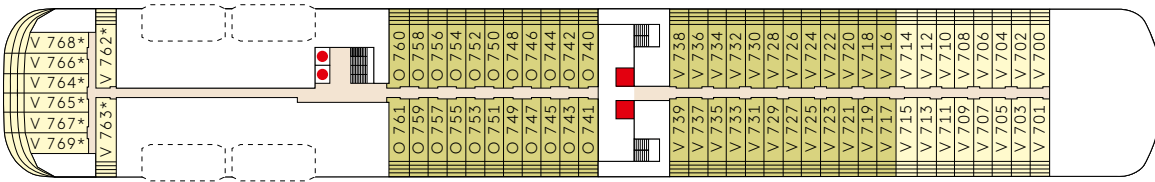


Deck 8



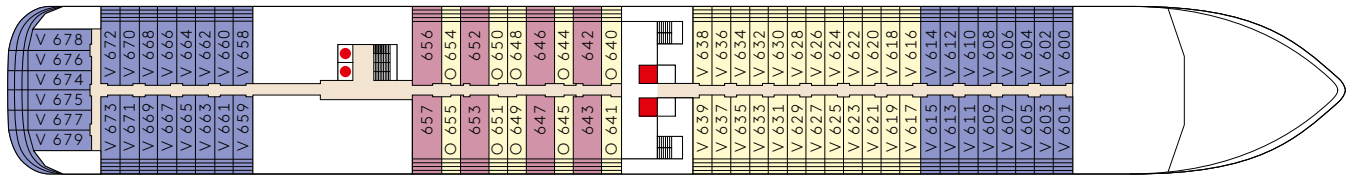
V = Veranda Suite, O = Ocean Suite, -- = Suites with connecting door.  
 = Suites with fully accessible layout and equipment. -- = Family Apartments with connecting door.

Deck 7



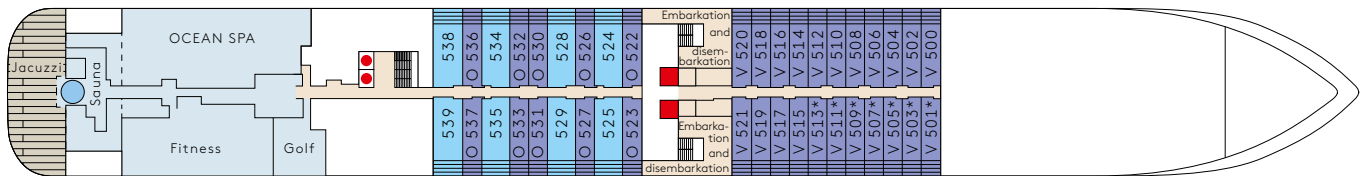
V = Veranda Suite, O = Ocean Suite, -- = Suites with connecting door.  
 \*The suites 762-769 underneath the Sansibar may be subject to a slight noise disturbance as a result of the entertainment programme.

Deck 6



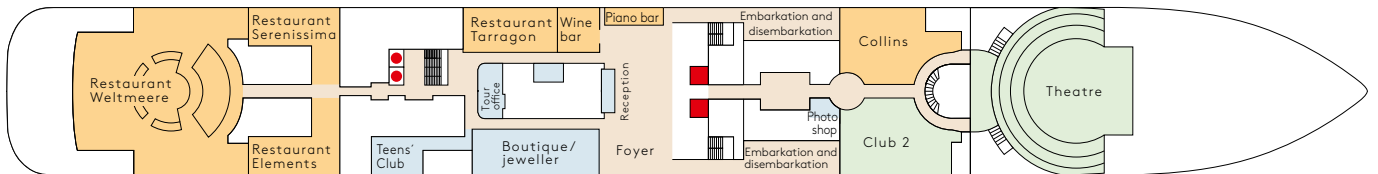
V = Veranda Suite, O = Ocean Suite, -- = Suites with connecting door.

Deck 5



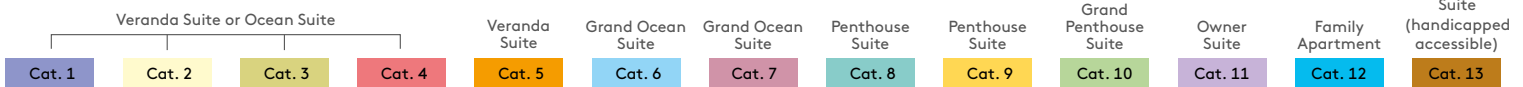
V = Veranda Suite, O = Ocean Suite.  
 \*The suites 501-513 (odd numbers) above the Club 2 may be subject to a slight noise disturbance as a result of the entertainment programme.

Deck 4



The tender stations are to be found on Deck 3.

● Lift      ■ Glass Lift



V = Veranda Suite, O = Ocean Suite

□ Non-public area

■ Restaurants and bars

■ Entertainment area

# MS EUROPA 2 – A DISTINGUISHED SHIP.



READERS' TRAVEL AWARD 2020

The world's most beautiful cruise ship  
2020 according to Travel + Leisure

www.vip-international.com



Be inspired at [www.hl-cruises.com](http://www.hl-cruises.com) or [www.facebook.com/hlcruises](https://www.facebook.com/hlcruises).

Book now: on our website or by phone +49 40 30703070, Hapag-Lloyd Cruises, a TUI Cruises GmbH company, Heidenkampsweg 58, 20097 Hamburg, Germany, via email [service@hl-cruises.com](mailto:service@hl-cruises.com), and at your travel agency.

**Free phone:** Belgium 0800 79421 · Netherlands 08000 220459 · United Kingdom 08000 513829 · USA 877 4457447 or 800 3342724



HAPAG <sup>18</sup>/<sub>91</sub> LLOYD  
CRUISES

# MS EUROPA 2

## ON SAFARI IN WONDERFUL SOUTH AFRICA.

FROM CAPE TOWN TO PORT LOUIS (MAURITIUS)

28 OCT – 10 NOV 2022 | 13 DAYS | EUX2226

Fascinating insights into foreign cultures, the beauty of South Africa and a relaxing wind-down to your cruise on Mauritius – this is what you will experience on this unforgettable voyage with the EUROPA 2. Prepare to be captivated by breathtaking landscape panoramas and exotic wildlife.

### ITINERARY

 = golf course

		Individual travel arrangements to Cape Town
28 Oct	Fri	Cape Town/South Africa Overnight stay on board
29 Oct	Sat	Cape Town
30 Oct	Sun	Relaxation at sea
31 Oct	Mon	Port Elizabeth/South Africa 
01 Nov	Tue	East London/South Africa
02 Nov	Wed	Durban/South Africa 
03 Nov	Thu	Richards Bay/South Africa
04 Nov	Fri	Relaxation at sea
05 Nov	Sat	Relaxation at sea
06 Nov	Sun	Port d'Ehoala (Taolanaro)/Madagascar
07 Nov	Mon	Relaxation at sea
08 Nov	Tue	Le Port/Reunion/France 
09 Nov	Wed	Port Louis/Mauritius  Overnight stay on board
10 Nov	Thu	Port Louis Individual travel arrangements from Port Louis



Reunion




Golf & Cruise voyage



For more information on this cruise,  
please visit [www.hl-cruises.com/EUX2226](http://www.hl-cruises.com/EUX2226)

# CRUISE PRICES

CRUISE NO.	EUX2226		
HARBOUR – HARBOUR	Cape Town – Mauritius		
TRAVEL DATES	28 Oct – 10 Nov 2022 13 days		
Special travel information	Golf & Cruise voyage 		
Price per person in	euros (EUR)	US dollars (USD)	pounds sterling (GBP)
	cruise only	cruise only	cruise only
Veranda Suite <sup>1</sup> or Ocean Suite <sup>1</sup> , Cat. 1, 35 m <sup>2</sup> (376 ft <sup>2</sup> )	8,590	9,880	7,560
Veranda Suite <sup>1</sup> or Ocean Suite <sup>1</sup> , Cat. 2, 35 m <sup>2</sup> (376 ft <sup>2</sup> )	9,280	10,680	8,170
Veranda Suite <sup>1</sup> or Ocean Suite <sup>1</sup> for single occupancy, Cat. 1–2	11,390	13,100	10,030
Veranda Suite <sup>1</sup> or Ocean Suite <sup>1</sup> , Cat. 3, 35 m <sup>2</sup> (376 ft <sup>2</sup> )	10,170	11,700	8,950
Veranda Suite <sup>1</sup> or Ocean Suite <sup>1</sup> , Cat. 4, 35 m <sup>2</sup> (376 ft <sup>2</sup> )	10,580	12,170	9,320
Veranda Suite <sup>1</sup> or Ocean Suite <sup>1</sup> for single occupancy, Cat. 3–4	13,420	15,440	11,810
Veranda Suite, Cat. 5, 35 m <sup>2</sup> (376 ft <sup>2</sup> )	11,390	13,100	10,030
Grand Ocean Suite, Cat. 6, 52 m <sup>2</sup> (560 ft <sup>2</sup> )	14,640	16,840	12,890
Grand Ocean Suite, Cat. 7, 52 m <sup>2</sup> (560 ft <sup>2</sup> )	15,530	17,860	13,670
Penthouse Suite, Cat. 8, 52 m <sup>2</sup> (560 ft <sup>2</sup> )	17,320	19,920	15,250
Penthouse Suite, Cat. 9, 52 m <sup>2</sup> (560 ft <sup>2</sup> )	19,110	21,980	16,820
Grand Penthouse Suite, Cat. 10, 88 m <sup>2</sup> (948 ft <sup>2</sup> )	27,230	31,320	23,970
Owner Suite, Cat. 11, 114 m <sup>2</sup> (1,227 ft <sup>2</sup> )	33,820	38,900	29,770
Family Apartment, Cat. 12, 2x 27 m <sup>2</sup> (290 ft <sup>2</sup> )	10,580	12,170	9,320
Penthouse Suite, for disabled guests, Cat. 13, 52 m <sup>2</sup> (560 ft <sup>2</sup> )	14,640	16,840	12,890
Extra bed for 3rd person, Cat. 14	6,110	7,030	5,380
Guaranteed Veranda/Ocean Suite <sup>2</sup> , Cat. 0, 35 m <sup>2</sup> (376 ft <sup>2</sup> )	8,190	9,420	7,210

## DISCOUNTS:

5% early booking discount (cruise only) until

01 Apr 2022

Exchange rates: USD 1.15 = EUR 1.00, GBP 0.88 = EUR 1.00  
All dimensions apply including the veranda.

## THE CRUISE PRICE (CRUISE ONLY) INCLUDES THE FOLLOWING, A. O.:

- Full board: breakfast, late risers breakfast, lunch and dinner, afternoon tea and coffee with pastries, midnight snack.
- 24-hour suite service.
- A mini bar in the suite with soft drinks and beer (refilled daily).
- A different entertainment programme every day.
- Free use of the on-board facilities and equipment, a.o. library, sauna, fitness area, golf simulators, snorkelling equipment and bicycles (subject to official approval).
- Free use of the Internet on board (one hour per guest and day, further information at [www.hl-cruises.com/internet](http://www.hl-cruises.com/internet)).
- TV with a wide range of entertainment and information options.
- Harbour fees.
- Cancellation fee insurance.

## CRUISE-ONLY ARRANGEMENTS

Generally, all voyages are offered with our cruise-only prices. You will need to organise your own travel arrangements to the cruise departure and from the cruise arrival point. Please ask your travel agency for assistance.

## EARLY BOOKING DISCOUNT

Those who make their minds up quickly can save 5% on the cruise price up to the date listed in the price table.

## DISCOUNTS FOR CHILDREN

Also your youngest are always welcome on board the EUROPA 2 – and you can even enjoy savings:

- Children up to and including 11 years of age travel for free, children aged from 12 to 15 pay EUR 90 (USD 110/GBP 80) per night (when staying in the same suite [with an extra bed] as one or two fully-paying adults). The age of the child on the date of departure is decisive.

## GOLF & CRUISE VOYAGE

On Golf & Cruise voyages, you stop at the world's best and most beautiful greens and are overseen by PGA golf professionals. For more information visit [www.hl-cruises.com/golf-cruises](http://www.hl-cruises.com/golf-cruises).

<sup>1</sup>Please note that you can choose between a Veranda Suite and an Ocean Suite in Categories 1 – 4. For more information please visit [www.hl-cruises.com/ms-europa-2/living](http://www.hl-cruises.com/ms-europa-2/living).

<sup>2</sup>You pay only the guaranteed price for double occupancy shown here per person. Accommodation will be provided in a Veranda Suite or an Ocean Suite in Categories 1–4, subject to availability. If you book a combination of one cruise with another cruise in a Guaranteed Veranda or Ocean Suite, no combination discount will be offered and it will be necessary to change suites between the individual cruises. Continuous occupancy of the same suite throughout the cruises is not possible. You will receive your exact suite number at the time of embarkation on board (limited allotment).

Be inspired at [www.hl-cruises.com](http://www.hl-cruises.com) and [www.facebook.com/hlcruises](https://www.facebook.com/hlcruises).

Book now: on our website or by phone +49 40 30703070, Hapag-Lloyd Cruises, a TUI Cruises GmbH company, Heidenkampsweg 58, 20097 Hamburg, Germany, via email [service@hl-cruises.com](mailto:service@hl-cruises.com), and at your travel agency.

**Free phone:** Belgium 0800 79421 · Netherlands 08000 220459 · United Kingdom 08000 513829 · USA 877 4457447 or 800 3342724



# MS EUROPA 2

## THE ISLAND REALMS OF THE SOUTH SEAS.

### FROM FIJI TO AUCKLAND

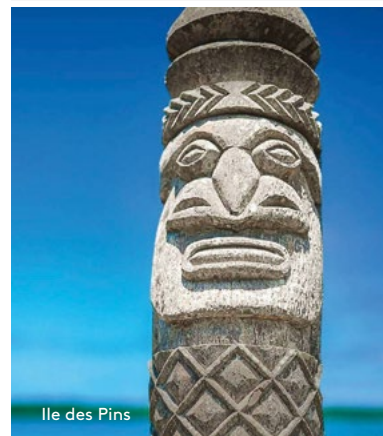
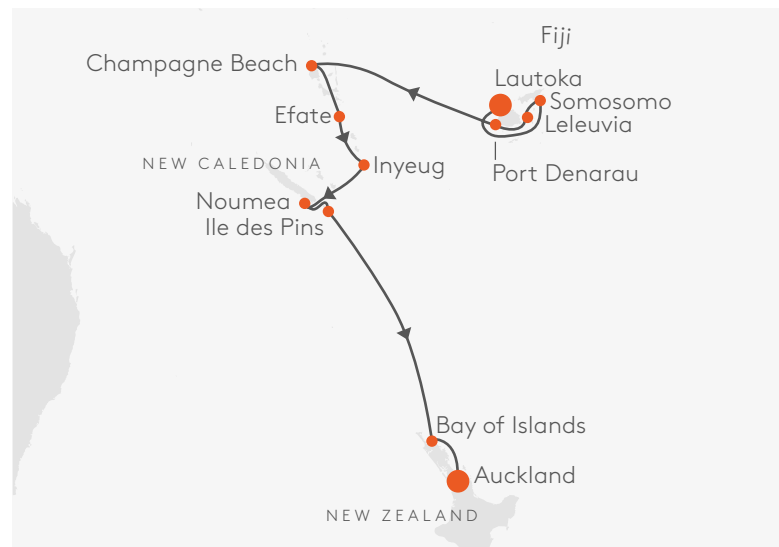
06 JAN – 20 JAN 2023 | 14 DAYS | EUX2301

Join the EUROPA 2 on a cruise into paradise. Discover volcanic islands, exotic nature, roaring waterfalls, coral reefs and picture-perfect beaches on a route through the South Seas to the coasts of New Zealand.

#### ITINERARY

⚓ = at anchor ⚓ = Zodiac landing\*

		Individual travel arrangements to Lautoka
06 Jan	Fri	Lautoka/Viti Levu/Fiji
07 Jan	Sat	Relaxation at sea
08 Jan	Sun	Somosomo/Taveuni/Fiji ⚓
09 Jan	Mon	Leleuvia/Fiji ⚓ ⚓
10 Jan	Tue	Port Denarau/Viti Levu/Fiji ⚓
11 Jan	Wed	Relaxation at sea
12 Jan	Thu	Champagne Beach/Espiritu Santo/Vanuatu ⚓ ⚓
13 Jan	Fri	Port Vila/Efate/Vanuatu
14 Jan	Sat	Inyeug (Mystery Island)/Vanuatu ⚓
15 Jan	Sun	Noumea/Grande Terre/New Caledonia
16 Jan	Mon	Ile des Pins**/New Caledonia ⚓
17 Jan	Tue	Relaxation at sea
18 Jan	Wed	Relaxation at sea
19 Jan	Thu	Bay of Islands/New Zealand ⚓
20 Jan	Fri	Auckland/New Zealand Individual travel arrangements from Auckland



\*Depending on weather conditions.

\*\*The assignment of the ship's berth will be done after this brochure has been published. Adjustments can therefore not be excluded.



For more information on this cruise, please visit [www.hl-cruises.com/EUX2301](http://www.hl-cruises.com/EUX2301)

# CRUISE PRICES

CRUISE NO.	EUX2301		
HARBOUR – HARBOUR	Fiji – Auckland		
TRAVEL DATES	06 Jan – 20 Jan 2023 14 days		
Price per person in	euros (EUR) cruise only	US dollars (USD) cruise only	pounds sterling (GBP) cruise only
Veranda Suite <sup>1</sup> or Ocean Suite <sup>1</sup> , Cat. 1, 35 m <sup>2</sup> (376 ft <sup>2</sup> )	9,890	11,380	8,710
Veranda Suite <sup>1</sup> or Ocean Suite <sup>1</sup> , Cat. 2, 35 m <sup>2</sup> (376 ft <sup>2</sup> )	10,670	12,280	9,390
Veranda Suite <sup>1</sup> or Ocean Suite <sup>1</sup> for single occupancy, Cat. 1–2	13,050	15,010	11,490
Veranda Suite <sup>1</sup> or Ocean Suite <sup>1</sup> , Cat. 3, 35 m <sup>2</sup> (376 ft <sup>2</sup> )	11,590	13,330	10,200
Veranda Suite <sup>1</sup> or Ocean Suite <sup>1</sup> , Cat. 4, 35 m <sup>2</sup> (376 ft <sup>2</sup> )	12,010	13,820	10,570
Veranda Suite <sup>1</sup> or Ocean Suite <sup>1</sup> for single occupancy, Cat. 3–4	15,150	17,430	13,340
Veranda Suite, Cat. 5, 35 m <sup>2</sup> (376 ft <sup>2</sup> )	12,850	14,780	11,310
Grand Ocean Suite, Cat. 6, 52 m <sup>2</sup> (560 ft <sup>2</sup> )	16,210	18,650	14,270
Grand Ocean Suite, Cat. 7, 52 m <sup>2</sup> (560 ft <sup>2</sup> )	17,130	19,700	15,080
Penthouse Suite, Cat. 8, 52 m <sup>2</sup> (560 ft <sup>2</sup> )	18,980	21,830	16,710
Penthouse Suite, Cat. 9, 52 m <sup>2</sup> (560 ft <sup>2</sup> )	20,830	23,960	18,340
Grand Penthouse Suite, Cat. 10, 88 m <sup>2</sup> (948 ft <sup>2</sup> )	29,230	33,620	25,730
Owner Suite, Cat. 11, 114 m <sup>2</sup> (1,227 ft <sup>2</sup> )	36,030	41,440	31,710
Family Apartment, Cat. 12, 2x 27 m <sup>2</sup> (290 ft <sup>2</sup> )	12,210	14,050	10,750
Penthouse Suite, for disabled guests, Cat. 13, 52 m <sup>2</sup> (560 ft <sup>2</sup> )	16,210	18,650	14,270
Extra bed for 3rd person, Cat. 14	7,590	8,730	6,680
Guaranteed Veranda/Ocean Suite <sup>2</sup> , Cat. 0, 35 m <sup>2</sup> (376 ft <sup>2</sup> )	9,490	10,920	8,360

## DISCOUNTS:

5% early booking discount (cruise only) until

15 Jun 2022

Exchange rates: USD 1.15 = EUR 1.00, GBP 0.88 = EUR 1.00  
All dimensions apply including the veranda.

## THE CRUISE PRICE (CRUISE ONLY) INCLUDES THE FOLLOWING, A. O.:

- Full board: breakfast, late risers breakfast, lunch and dinner, afternoon tea and coffee with pastries, midnight snack.
- 24-hour suite service.
- A mini bar in the suite with soft drinks and beer (refilled daily).
- A different entertainment programme every day.
- Free use of the on-board facilities and equipment, a. o. library, sauna, fitness area, golf simulators, snorkelling equipment and bicycles (subject to official approval).
- Free use of the Internet on board (one hour per guest and day, further information at [www.hl-cruises.com/internet](http://www.hl-cruises.com/internet)).
- TV with a wide range of entertainment and information options.
- Harbour fees.
- Cancellation fee insurance.

## CRUISE-ONLY ARRANGEMENTS

Generally, all voyages are offered with our cruise-only prices. You will need to organise your own travel arrangements to the cruise departure and from the cruise arrival point. Please ask your travel agency for assistance.

## EARLY BOOKING DISCOUNT

Those who make their minds up quickly can save 5% on the cruise price up to the date listed in the price table.

## DISCOUNTS FOR CHILDREN

Also your youngest are always welcome on board the EUROPA 2 – and you can even enjoy savings:

- Children up to and including 11 years of age travel for free, children aged from 12 to 15 pay EUR 90 (USD 110/GBP 80) per night (when staying in the same suite [with an extra bed] as one or two fully-paying adults). The age of the child on the date of departure is decisive.

<sup>1</sup>Please note that you can choose between a Veranda Suite and an Ocean Suite in Categories 1 – 4. For more information please visit [www.hl-cruises.com/ms-europa-2/living](http://www.hl-cruises.com/ms-europa-2/living).

<sup>2</sup>You pay only the guaranteed price for double occupancy shown here per person. Accommodation will be provided in a Veranda Suite or an Ocean Suite in Categories 1–4, subject to availability. If you book a combination of one cruise with another cruise in a Guaranteed Veranda or Ocean Suite, no combination discount will be offered and it will be necessary to change suites between the individual cruises. Continuous occupancy of the same suite throughout the cruises is not possible. You will receive your exact suite number at the time of embarkation on board (limited allotment).

Be inspired at [www.hl-cruises.com](http://www.hl-cruises.com) and [www.facebook.com/hlcruises](https://www.facebook.com/hlcruises).

Book now: on our website or by phone +49 40 30703070, Hapag-Lloyd Cruises, a TUI Cruises GmbH company, Heidenkampsweg 58, 20097 Hamburg, Germany, via email [service@hl-cruises.com](mailto:service@hl-cruises.com), and at your travel agency.

**Free phone:** Belgium 0800 79421 · Netherlands 08000 220459 · United Kingdom 08000 513829 · USA 877 4457447 or 800 3342724



# MS EUROPA 2

## MULTIFACETED BEIJING.

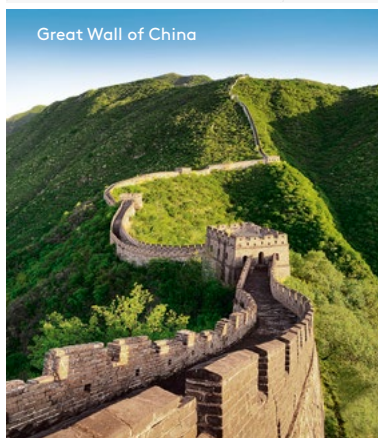
FROM HONG KONG TO TOKYO

10 MAR – 27 MAR 2023 | 17 DAYS | EUX2305

Celebrate a premiere with the EUROPA 2 when the ship sets course for Beijing for the very first time on a route from China via South Korea to Japan. Marvel at the Great Wall of China, the impressive Peace Park in Nagasaki and the huge main gate of the Imperial Palace in Tokyo.

### ITINERARY

		Individual travel arrangements to Hong Kong
10 Mar	Fri	Hong Kong/China
11 Mar	Sat	Relaxation at sea
12 Mar	Sun	Xiamen/Fujian/China
13 Mar	Mon	Relaxation at sea
14 Mar	Tue	Shanghai/China
15 Mar	Wed	Shanghai
16 Mar	Thu	Relaxation at sea
17 Mar	Fri	Tianjin (Peking)/China
18 Mar	Sat	Tianjin (Peking)
19 Mar	Sun	Tianjin (Peking)
20 Mar	Mon	Relaxation at sea
21 Mar	Tue	Relaxation at sea
22 Mar	Wed	Nagasaki/Japan
23 Mar	Thu	Busan/South Korea
24 Mar	Fri	Relaxation at sea
25 Mar	Sat	Shimizu/Japan
26 Mar	Sun	Tokyo/Japan
		Overnight stay on board
27 Mar	Mon	Tokyo
		Individual travel arrangements from Tokyo



For more information on this cruise, please visit [www.hl-cruises.com/EUX2305](http://www.hl-cruises.com/EUX2305)

# CRUISE PRICES

CRUISE NO.	EUX2305		
HARBOUR – HARBOUR	Hong Kong – Tokyo		
TRAVEL DATES	10 Mar – 27 Mar 2023 17 days		
Price per person in	euros (EUR) cruise only	US dollars (USD) cruise only	pounds sterling (GBP) cruise only
Veranda Suite <sup>1</sup> or Ocean Suite <sup>1</sup> , Cat. 1, 35 m <sup>2</sup> (376 ft <sup>2</sup> )	11,390	13,100	10,030
Veranda Suite <sup>1</sup> or Ocean Suite <sup>1</sup> , Cat. 2, 35 m <sup>2</sup> (376 ft <sup>2</sup> )	12,450	14,320	10,960
Veranda Suite <sup>1</sup> or Ocean Suite <sup>1</sup> for single occupancy, Cat. 1–2	15,450	17,770	13,600
Veranda Suite <sup>1</sup> or Ocean Suite <sup>1</sup> , Cat. 3, 35 m <sup>2</sup> (376 ft <sup>2</sup> )	13,720	15,780	12,080
Veranda Suite <sup>1</sup> or Ocean Suite <sup>1</sup> , Cat. 4, 35 m <sup>2</sup> (376 ft <sup>2</sup> )	14,300	16,450	12,590
Veranda Suite <sup>1</sup> or Ocean Suite <sup>1</sup> for single occupancy, Cat. 3–4	18,340	21,100	16,140
Veranda Suite, Cat. 5, 35 m <sup>2</sup> (376 ft <sup>2</sup> )	15,450	17,770	13,600
Grand Ocean Suite, Cat. 6, 52 m <sup>2</sup> (560 ft <sup>2</sup> )	20,080	23,100	17,680
Grand Ocean Suite, Cat. 7, 52 m <sup>2</sup> (560 ft <sup>2</sup> )	21,350	24,560	18,790
Penthouse Suite, Cat. 8, 52 m <sup>2</sup> (560 ft <sup>2</sup> )	23,890	27,480	21,030
Penthouse Suite, Cat. 9, 52 m <sup>2</sup> (560 ft <sup>2</sup> )	26,440	30,410	23,270
Grand Penthouse Suite, Cat. 10, 88 m <sup>2</sup> (948 ft <sup>2</sup> )	38,000	43,700	33,440
Owner Suite, Cat. 11, 114 m <sup>2</sup> (1,227 ft <sup>2</sup> )	47,360	54,470	41,680
Family Apartment, Cat. 12, 2x 27 m <sup>2</sup> (290 ft <sup>2</sup> )	14,300	16,450	12,590
Penthouse Suite, for disabled guests, Cat. 13, 52 m <sup>2</sup> (560 ft <sup>2</sup> )	20,080	23,100	17,680
Extra bed for 3rd person, Cat. 14	7,940	9,140	6,990
Guaranteed Veranda/Ocean Suite <sup>2</sup> , Cat. 0, 35 m <sup>2</sup> (376 ft <sup>2</sup> )	10,890	12,530	9,590

Exchange rates: USD 1.15 = EUR 1.00, GBP 0.88 = EUR 1.00  
All dimensions apply including the veranda.

## THE CRUISE PRICE (CRUISE ONLY) INCLUDES THE FOLLOWING, A. O.:

- Full board: breakfast, late risers breakfast, lunch and dinner, afternoon tea and coffee with pastries, midnight snack.
- 24-hour suite service.
- A mini bar in the suite with soft drinks and beer (refilled daily).
- A different entertainment programme every day.
- Free use of the on-board facilities and equipment, a. o. library, sauna, fitness area, golf simulators, snorkelling equipment and bicycles (subject to official approval).
- Free use of the Internet on board (one hour per guest and day, further information at [www.hl-cruises.com/internet](http://www.hl-cruises.com/internet)).
- TV with a wide range of entertainment and information options.
- Harbour fees.
- Cancellation fee insurance.

## CRUISE-ONLY ARRANGEMENTS

Generally, all voyages are offered with our cruise-only prices. You will need to organise your own travel arrangements to the cruise departure and from the cruise arrival point. Please ask your travel agency for assistance.

## DISCOUNTS FOR CHILDREN

Also your youngest are always welcome on board the EUROPA 2 – and you can even enjoy savings:

- Children up to and including 11 years of age travel for free, children aged from 12 to 15 pay EUR 90 (USD 110/GBP 80) per night (when staying in the same suite [with an extra bed] as one or two fully-paying adults). The age of the child on the date of departure is decisive.

<sup>1</sup>Please note that you can choose between a Veranda Suite and an Ocean Suite in Categories 1–4. For more information please visit [www.hl-cruises.com/ms-europa-2/living](http://www.hl-cruises.com/ms-europa-2/living).

<sup>2</sup>You pay only the guaranteed price for double occupancy shown here per person. Accommodation will be provided in a Veranda Suite or an Ocean Suite in Categories 1–4, subject to availability. If you book a combination of one cruise with another cruise in a Guaranteed Veranda or Ocean Suite, no combination discount will be offered and it will be necessary to change suites between the individual cruises. Continuous occupancy of the same suite throughout the cruises is not possible. You will receive your exact suite number at the time of embarkation on board (limited allotment).

Be inspired at [www.hl-cruises.com](http://www.hl-cruises.com) and [www.facebook.com/hlcruises](https://www.facebook.com/hlcruises).

Book now: on our website or by phone +49 40 30703070, Hapag-Lloyd Cruises, a TUI Cruises GmbH company, Heidenkampsweg 58, 20097 Hamburg, Germany, via email [service@hl-cruises.com](mailto:service@hl-cruises.com), and at your travel agency.

**Free phone:** Belgium 0800 79421 · Netherlands 08000 220459 · United Kingdom 08000 513829 · USA 877 4457447 or 800 3342724



# MS EUROPA 2

## THE SUN-KISSED AEGEAN.

FROM ISTANBUL TO PIRAEUS (ATHENS)

01 JUN - 10 JUN 2023 | 9 DAYS | EUX2311

Whether Kavala's fascinating old town or the modern metropolis of Thessaloniki, the wide beaches of Skiathos, the canal and the historic excavations of Corinth or the romantic island of Hydra – the Aegean shows you a world full of contrasts on this cruise with the EUROPA 2.

### ITINERARY


⚓ = at anchor

		Individual travel arrangements to Istanbul
01 Jun	Thu	Istanbul/Turkey
02 Jun	Fri	Cruising through the Dardanelles/Turkey
03 Jun	Sat	Kavala/Greece
04 Jun	Sun	Thessaloniki/Greece
05 Jun	Mon	Thessaloniki Skiathos/Sporades/Greece ⚓
06 Jun	Tue	Mykonos/Cyclades/Greece ⚓
07 Jun	Wed	Paros/Cyclades/Greece ⚓
08 Jun	Thu	Nauplia/Peloponnese/Greece ⚓
09 Jun	Fri	Hydra/Saronic Islands/Greece ⚓
10 Jun	Sat	Piraeus (Athens)/Greece Individual travel arrangements from Piraeus



For more information on this cruise, please visit [www.hl-cruises.com/EUX2311](http://www.hl-cruises.com/EUX2311)

# CRUISE PRICES

CRUISE NO.	EUX2311		
HARBOUR – HARBOUR	Istanbul – Piraeus (Athens)		
TRAVEL DATES	01 Jun – 10 Jun 2023 9 days		
Special travel information	Family cruise 		
Price per person in	euros (EUR)	US dollars (USD)	pounds sterling (GBP)
	cruise only	cruise only	cruise only
Veranda Suite <sup>1</sup> or Ocean Suite <sup>1</sup> , Cat. 1, 35 m <sup>2</sup> (376 ft <sup>2</sup> )	5,790	6,660	5,100
Veranda Suite <sup>1</sup> or Ocean Suite <sup>1</sup> , Cat. 2, 35 m <sup>2</sup> (376 ft <sup>2</sup> )	6,280	7,230	5,530
Veranda Suite <sup>1</sup> or Ocean Suite <sup>1</sup> for single occupancy, Cat. 1–2	7,740	8,910	6,820
Veranda Suite <sup>1</sup> or Ocean Suite <sup>1</sup> , Cat. 3, 35 m <sup>2</sup> (376 ft <sup>2</sup> )	6,890	7,930	6,070
Veranda Suite <sup>1</sup> or Ocean Suite <sup>1</sup> , Cat. 4, 35 m <sup>2</sup> (376 ft <sup>2</sup> )	7,180	8,260	6,320
Veranda Suite <sup>1</sup> or Ocean Suite <sup>1</sup> for single occupancy, Cat. 3–4	9,140	10,520	8,050
Veranda Suite, Cat. 5, 35 m <sup>2</sup> (376 ft <sup>2</sup> )	7,740	8,910	6,820
Grand Ocean Suite, Cat. 6, 52 m <sup>2</sup> (560 ft <sup>2</sup> )	9,990	11,490	8,800
Grand Ocean Suite, Cat. 7, 52 m <sup>2</sup> (560 ft <sup>2</sup> )	10,610	12,210	9,340
Penthouse Suite, Cat. 8, 52 m <sup>2</sup> (560 ft <sup>2</sup> )	11,840	13,620	10,420
Penthouse Suite, Cat. 9, 52 m <sup>2</sup> (560 ft <sup>2</sup> )	13,080	15,050	11,520
Grand Penthouse Suite, Cat. 10, 88 m <sup>2</sup> (948 ft <sup>2</sup> )	18,710	21,520	16,470
Owner Suite, Cat. 11, 114 m <sup>2</sup> (1,227 ft <sup>2</sup> )	23,260	26,750	20,470
Family Apartment, Cat. 12, 2x 27 m <sup>2</sup> (290 ft <sup>2</sup> )	7,180	8,260	6,320
Penthouse Suite, for disabled guests, Cat. 13, 52 m <sup>2</sup> (560 ft <sup>2</sup> )	9,990	11,490	8,800
Extra bed for 3rd person, Cat. 14	4,080	4,700	3,600
Guaranteed Veranda/Ocean Suite <sup>2</sup> , Cat. 0, 35 m <sup>2</sup> (376 ft <sup>2</sup> )	5,490	6,320	4,840

## DISCOUNTS:

5% early booking discount (cruise only) until

01 Nov 2022

Exchange rates: USD 1.15 = EUR 1.00, GBP 0.88 = EUR 1.00  
All dimensions apply including the veranda.

## THE CRUISE PRICE (CRUISE ONLY) INCLUDES THE FOLLOWING, A. O.:

- Full board: breakfast, late risers breakfast, lunch and dinner, afternoon tea and coffee with pastries, midnight snack.
- 24-hour suite service.
- A mini bar in the suite with soft drinks and beer (refilled daily).
- A different entertainment programme every day.
- Free use of the on-board facilities and equipment, a.o. library, sauna, fitness area, golf simulators, snorkelling equipment and bicycles (subject to official approval).
- Free use of the Internet on board (one hour per guest and day, further information at [www.hl-cruises.com/internet](http://www.hl-cruises.com/internet)).
- TV with a wide range of entertainment and information options.
- Harbour fees.
- Cancellation fee insurance.

## CRUISE-ONLY ARRANGEMENTS

Generally, all voyages are offered with our cruise-only prices. You will need to organise your own travel arrangements to the cruise departure and from the cruise arrival point. Please ask your travel agency for assistance.

## EARLY BOOKING DISCOUNT

Those who make their minds up quickly can save 5% on the cruise price up to the date listed in the price table.

## DISCOUNTS FOR CHILDREN

Also your youngest are always welcome on board the EUROPA 2 – and you can even enjoy savings:

- Children up to and including 11 years of age travel for free, children aged from 12 to 15 pay EUR 90 (USD 110/GBP 80) per night (when staying in the same suite [with an extra bed] as one or two fully-paying adults). The age of the child on the date of departure is decisive.

## FAMILY CRUISE

These cruises offer excursions specially designed for children and teens, family-friendly tours, specialist childcare and attractive savings such as discounts for children.

<sup>1</sup>Please note that you can choose between a Veranda Suite and an Ocean Suite in Categories 1 – 4. For more information please visit [www.hl-cruises.com/ms-europa-2/living](http://www.hl-cruises.com/ms-europa-2/living).

<sup>2</sup>You pay only the guaranteed price for double occupancy shown here per person. Accommodation will be provided in a Veranda Suite or an Ocean Suite in Categories 1–4, subject to availability. If you book a combination of one cruise with another cruise in a Guaranteed Veranda or Ocean Suite, no combination discount will be offered and it will be necessary to change suites between the individual cruises. Continuous occupancy of the same suite throughout the cruises is not possible. You will receive your exact suite number at the time of embarkation on board (limited allotment).

Be inspired at [www.hl-cruises.com](http://www.hl-cruises.com) and [www.facebook.com/hlcruises](https://www.facebook.com/hlcruises).

Book now: on our website or by phone +49 40 30703070, Hapag-Lloyd Cruises, a TUI Cruises GmbH company, Heidenkampsweg 58, 20097 Hamburg, Germany, via email [service@hl-cruises.com](mailto:service@hl-cruises.com), and at your travel agency.

**Free phone:** Belgium 0800 79421 · Netherlands 08000 220459 · United Kingdom 08000 513829 · USA 877 4457447 or 800 3342724



# MS EUROPA 2

## THE CHARMING PORT TOWNS OF THE ADRIATIC.

FROM PIRAEUS (ATHENS) TO VENICE

10 JUN – 21 JUN 2023 | 11 DAYS | EUX2312

Enjoy the flair of the Adriatic on the most beautiful coastlines of Montenegro, Croatia and Italy. Whilst Kotor and Dubrovnik showcase houses steeped in history, Trogir will take your breath away as a treasure trove of art and Venice with its charming canals.

### ITINERARY

⚓ = at anchor

		Individual travel arrangements to Piraeus
10 Jun	Sat	Piraeus (Athens)/Greece
11 Jun	Sun	Thira/Santorini/Cyclades/Greece ⚓
12 Jun	Mon	Monemvasia/Peloponnese/Greece ⚓
13 Jun	Tue	Relaxation at sea
14 Jun	Wed	Argostolion/Kefalonia/Ionian Islands/Greece
15 Jun	Thu	Kerkyra/Corfu/Ionian Islands/Greece
16 Jun	Fri	Kotor/Montenegro ⚓ Dubrovnik/Croatia ⚓
17 Jun	Sat	Dubrovnik ⚓
18 Jun	Sun	Trogir/Croatia ⚓
19 Jun	Mon	Opatija/Croatia ⚓
20 Jun	Tue	Trieste/Italy Venice/Italy Overnight stay on board
21 Jun	Wed	Venice Individual travel arrangements from Venice



For more information on this cruise, please visit [www.hl-cruises.com/EUX2312](http://www.hl-cruises.com/EUX2312)

# CRUISE PRICES

CRUISE NO.	EUX2312		
HARBOUR – HARBOUR	Piraeus (Athens) – Venice		
TRAVEL DATES	10 Jun – 21 Jun 2023 11 days		
Price per person in	euros (EUR) cruise only	US dollars (USD) cruise only	pounds sterling (GBP) cruise only
Veranda Suite <sup>1</sup> or Ocean Suite <sup>1</sup> , Cat. 1, 35 m <sup>2</sup> (376 ft <sup>2</sup> )	6,990	8,040	6,160
Veranda Suite <sup>1</sup> or Ocean Suite <sup>1</sup> , Cat. 2, 35 m <sup>2</sup> (376 ft <sup>2</sup> )	7,670	8,830	6,750
Veranda Suite <sup>1</sup> or Ocean Suite <sup>1</sup> for single occupancy, Cat. 1–2	9,480	10,910	8,350
Veranda Suite <sup>1</sup> or Ocean Suite <sup>1</sup> , Cat. 3, 35 m <sup>2</sup> (376 ft <sup>2</sup> )	8,430	9,700	7,420
Veranda Suite <sup>1</sup> or Ocean Suite <sup>1</sup> , Cat. 4, 35 m <sup>2</sup> (376 ft <sup>2</sup> )	8,780	10,100	7,730
Veranda Suite <sup>1</sup> or Ocean Suite <sup>1</sup> for single occupancy, Cat. 3–4	11,230	12,920	9,890
Veranda Suite, Cat. 5, 35 m <sup>2</sup> (376 ft <sup>2</sup> )	9,480	10,910	8,350
Grand Ocean Suite, Cat. 6, 52 m <sup>2</sup> (560 ft <sup>2</sup> )	12,280	14,130	10,810
Grand Ocean Suite, Cat. 7, 52 m <sup>2</sup> (560 ft <sup>2</sup> )	13,050	15,010	11,490
Penthouse Suite, Cat. 8, 52 m <sup>2</sup> (560 ft <sup>2</sup> )	14,580	16,770	12,840
Penthouse Suite, Cat. 9, 52 m <sup>2</sup> (560 ft <sup>2</sup> )	16,120	18,540	14,190
Grand Penthouse Suite, Cat. 10, 88 m <sup>2</sup> (948 ft <sup>2</sup> )	23,100	26,570	20,330
Owner Suite, Cat. 11, 114 m <sup>2</sup> (1,227 ft <sup>2</sup> )	28,760	33,080	25,310
Family Apartment, Cat. 12, 2x 27 m <sup>2</sup> (290 ft <sup>2</sup> )	8,780	10,100	7,730
Penthouse Suite, for disabled guests, Cat. 13, 52 m <sup>2</sup> (560 ft <sup>2</sup> )	12,280	14,130	10,810
Extra bed for 3rd person, Cat. 14	4,940	5,690	4,350
Guaranteed Veranda/Ocean Suite <sup>2</sup> , Cat. 0, 35 m <sup>2</sup> (376 ft <sup>2</sup> )	6,690	7,700	5,890

## DISCOUNTS:

5% early booking discount (cruise only) until

01 Nov 2022

Exchange rates: USD 1.15 = EUR 1.00, GBP 0.88 = EUR 1.00  
All dimensions apply including the veranda.

## THE CRUISE PRICE (CRUISE ONLY) INCLUDES THE FOLLOWING, A. O.:

- Full board: breakfast, late risers breakfast, lunch and dinner, afternoon tea and coffee with pastries, midnight snack.
- 24-hour suite service.
- A mini bar in the suite with soft drinks and beer (refilled daily).
- A different entertainment programme every day.
- Free use of the on-board facilities and equipment, a. o. library, sauna, fitness area, golf simulators, snorkelling equipment and bicycles (subject to official approval).
- Free use of the Internet on board (one hour per guest and day, further information at [www.hl-cruises.com/internet](http://www.hl-cruises.com/internet)).
- TV with a wide range of entertainment and information options.
- Harbour fees.
- Cancellation fee insurance.

## CRUISE-ONLY ARRANGEMENTS

Generally, all voyages are offered with our cruise-only prices. You will need to organise your own travel arrangements to the cruise departure and from the cruise arrival point. Please ask your travel agency for assistance.

## EARLY BOOKING DISCOUNT

Those who make their minds up quickly can save 5% on the cruise price up to the date listed in the price table.

## DISCOUNTS FOR CHILDREN

Also your youngest are always welcome on board the EUROPA 2 – and you can even enjoy savings:

- Children up to and including 11 years of age travel for free, children aged from 12 to 15 pay EUR 90 (USD 110/GBP 80) per night (when staying in the same suite [with an extra bed] as one or two fully-paying adults). The age of the child on the date of departure is decisive.

<sup>1</sup>Please note that you can choose between a Veranda Suite and an Ocean Suite in Categories 1 – 4. For more information please visit [www.hl-cruises.com/ms-europa-2/living](http://www.hl-cruises.com/ms-europa-2/living).

<sup>2</sup>You pay only the guaranteed price for double occupancy shown here per person. Accommodation will be provided in a Veranda Suite or an Ocean Suite in Categories 1–4, subject to availability. If you book a combination of one cruise with another cruise in a Guaranteed Veranda or Ocean Suite, no combination discount will be offered and it will be necessary to change suites between the individual cruises. Continuous occupancy of the same suite throughout the cruises is not possible. You will receive your exact suite number at the time of embarkation on board (limited allotment).

Be inspired at [www.hl-cruises.com](http://www.hl-cruises.com) and [www.facebook.com/hlcruises](https://www.facebook.com/hlcruises).

Book now: on our website or by phone +49 40 30703070, Hapag-Lloyd Cruises, a TUI Cruises GmbH company, Heidenkampsweg 58, 20097 Hamburg, Germany, via email [service@hl-cruises.com](mailto:service@hl-cruises.com), and at your travel agency.

**Free phone:** Belgium 0800 79421 · Netherlands 08000 220459 · United Kingdom 08000 513829 · USA 877 4457447 or 800 3342724



# MS EUROPA 2

## DREAMY HOTSPOTS IN THE MEDITERRANEAN.

CIVITAVECCHIA (ROME) – MONTE CARLO

03 JUL – 11 JUL 2023 | 8 DAYS | EUX2314

The colourful houses of Portofino, Corsica's luxurious Saint-Florent, Antibes with its sophisticated harbour and glamorous Monte Carlo – these places inspire international high society. You too can enjoy savoir vivre and dolce vita on the picturesque Mediterranean.

### ITINERARY

⚓ = at anchor ⛳ = golf course

		Individual travel arrangements to Civitavecchia
03 Jul	Mon	Civitavecchia (Rome)/Italy
04 Jul	Tue	Porto Santo Stefano/Italy ⚓ ⛳
05 Jul	Wed	Portoferraio/Elba/Italy
06 Jul	Thu	Livorno (Florence)/Italy
07 Jul	Fri	Portovenere/Italy ⚓ ⛳ Portofino/Italy ⚓
08 Jul	Sat	Portofino ⚓
09 Jul	Sun	Saint-Florent/Corsica/France ⚓
10 Jul	Mon	Antibes/France ⚓ ⛳ Monte Carlo/Monaco Overnight stay on board
11 Jul	Tue	Monte Carlo Individual travel arrangements from Monte Carlo





Golf & Cruise voyage



For more information on this cruise,  
please visit [www.hl-cruises.com/EUX2314](http://www.hl-cruises.com/EUX2314)

# CRUISE PRICES

CRUISE NO.	EUX2314		
HARBOUR – HARBOUR	Civitavecchia (Rome) – Monte Carlo		
TRAVEL DATES	03 Jul – 11 Jul 2023 8 days		
Special travel information	<b>Golf &amp; Cruise voyage</b>  <b>Family cruise</b> 		
Price per person in	euros (EUR)	US dollars (USD)	pounds sterling (GBP)
	cruise only	cruise only	cruise only
Veranda Suite <sup>1</sup> or Ocean Suite <sup>1</sup> , Cat. 1, 35 m <sup>2</sup> (376 ft <sup>2</sup> )	5,390	6,200	4,750
Veranda Suite <sup>1</sup> or Ocean Suite <sup>1</sup> , Cat. 2, 35 m <sup>2</sup> (376 ft <sup>2</sup> )	5,840	6,720	5,140
Veranda Suite <sup>1</sup> or Ocean Suite <sup>1</sup> for single occupancy, Cat. 1–2	7,200	8,280	6,340
Veranda Suite <sup>1</sup> or Ocean Suite <sup>1</sup> , Cat. 3, 35 m <sup>2</sup> (376 ft <sup>2</sup> )	6,420	7,390	5,650
Veranda Suite <sup>1</sup> or Ocean Suite <sup>1</sup> , Cat. 4, 35 m <sup>2</sup> (376 ft <sup>2</sup> )	6,680	7,690	5,880
Veranda Suite <sup>1</sup> or Ocean Suite <sup>1</sup> for single occupancy, Cat. 3–4	8,500	9,780	7,480
Veranda Suite, Cat. 5, 35 m <sup>2</sup> (376 ft <sup>2</sup> )	7,200	8,280	6,340
Grand Ocean Suite, Cat. 6, 52 m <sup>2</sup> (560 ft <sup>2</sup> )	9,280	10,680	8,170
Grand Ocean Suite, Cat. 7, 52 m <sup>2</sup> (560 ft <sup>2</sup> )	9,850	11,330	8,670
Penthouse Suite, Cat. 8, 52 m <sup>2</sup> (560 ft <sup>2</sup> )	10,990	12,640	9,680
Penthouse Suite, Cat. 9, 52 m <sup>2</sup> (560 ft <sup>2</sup> )	12,140	13,970	10,690
Grand Penthouse Suite, Cat. 10, 88 m <sup>2</sup> (948 ft <sup>2</sup> )	17,340	19,950	15,260
Owner Suite, Cat. 11, 114 m <sup>2</sup> (1,227 ft <sup>2</sup> )	21,550	24,790	18,970
Family Apartment, Cat. 12, 2x27 m <sup>2</sup> (290 ft <sup>2</sup> )	6,680	7,690	5,880
Penthouse Suite, for disabled guests, Cat. 13, 52 m <sup>2</sup> (560 ft <sup>2</sup> )	9,280	10,680	8,170
Extra bed for 3rd person, Cat. 14	3,820	4,400	3,370
Guaranteed Veranda/Ocean Suite <sup>2</sup> , Cat. 0, 35 m <sup>2</sup> (376 ft <sup>2</sup> )	4,990	5,740	4,400

## DISCOUNTS:

5% early booking discount (cruise only) until

01 Dec 2022

Exchange rates: USD 1.15 = EUR 1.00, GBP 0.88 = EUR 1.00  
All dimensions apply including the veranda.

## THE CRUISE PRICE (CRUISE ONLY) INCLUDES THE FOLLOWING, A. O.:

- Full board: breakfast, late risers breakfast, lunch and dinner, afternoon tea and coffee with pastries, midnight snack.
- 24-hour suite service.
- A mini bar in the suite with soft drinks and beer (refilled daily).
- A different entertainment programme every day.
- Free use of the on-board facilities and equipment, a. o. library, sauna, fitness area, golf simulators, snorkelling equipment and bicycles (subject to official approval).
- Free use of the Internet on board (one hour per guest and day, further information at [www.hl-cruises.com/internet](http://www.hl-cruises.com/internet)).
- TV with a wide range of entertainment and information options.
- Harbour fees.
- Cancellation fee insurance.

## CRUISE-ONLY ARRANGEMENTS

Generally, all voyages are offered with our cruise-only prices. You will need to organise your own travel arrangements to the cruise departure and from the cruise arrival point. Please ask your travel agency for assistance.

## EARLY BOOKING DISCOUNT

Those who make their minds up quickly can save 5% on the cruise price up to the date listed in the price table.

## DISCOUNTS FOR CHILDREN

Also your youngest are always welcome on board the EUROPA 2 – and you can even enjoy savings:

- Children up to and including 11 years of age travel for free, children aged from 12 to 15 pay EUR 90 (USD 110/GBP 80) per night (when staying in the same suite [with an extra bed] as one or two fully-paying adults). The age of the child on the date of departure is decisive.

## GOLF & CRUISE VOYAGE

On Golf & Cruise voyages, you stop at the world's best and most beautiful greens and are overseen by PGA golf professionals. For more information visit [www.hl-cruises.com/golf-cruises](http://www.hl-cruises.com/golf-cruises).

## FAMILY CRUISE

These cruises offer excursions specially designed for children and teens, family-friendly tours, specialist childcare and attractive savings such as discounts for children.

<sup>1</sup>Please note that you can choose between a Veranda Suite and an Ocean Suite in Categories 1 – 4. For more information please visit [www.hl-cruises.com/ms-europa-2/living](http://www.hl-cruises.com/ms-europa-2/living).

<sup>2</sup>You pay only the guaranteed price for double occupancy shown here per person. Accommodation will be provided in a Veranda Suite or an Ocean Suite in Categories 1–4, subject to availability. If you book a combination of one cruise with another cruise in a Guaranteed Veranda or Ocean Suite, no combination discount will be offered and it will be necessary to change suites between the individual cruises. Continuous occupancy of the same suite throughout the cruises is not possible. You will receive your exact suite number at the time of embarkation on board (limited allotment).

Be inspired at [www.hl-cruises.com](http://www.hl-cruises.com) and [www.facebook.com/hlcruises](https://www.facebook.com/hlcruises).

Book now: on our website or by phone +49 40 30703070, Hapag-Lloyd Cruises, a TUI Cruises GmbH company, Heidenkampsweg 58, 20097 Hamburg, Germany, via email [service@hl-cruises.com](mailto:service@hl-cruises.com), and at your travel agency.

**Free phone:** Belgium 0800 79421 · Netherlands 08000 220459 · United Kingdom 08000 513829 · USA 877 4457447 or 800 3342724



# MS EUROPA 2

## METROPOLISES AND TSARS' PALACES.

FROM HAMBURG TO ST PETERSBURG

11 AUG – 20 AUG 2023 | 9 DAYS | EUX2318

On the passage through the Kiel Canal, fascinating panoramas await you from your private veranda, which continue in the cities of Copenhagen and Helsinki before the splendour of the tsarist era enchants you in St Petersburg.

### ITINERARY

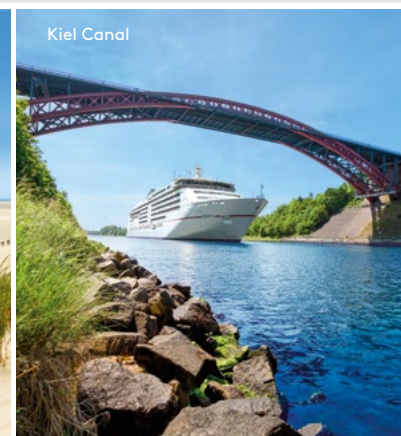
⚓ = at anchor ⚏ = golf course

Individual travel arrangements to Hamburg	
11 Aug	Fri Hamburg/Germany
12 Aug	Sat Daytime passage Kiel Canal/Germany
13 Aug	Sun Copenhagen/Denmark ⚏
14 Aug	Mon Gudhjem/Bornholm/Denmark ⚓
15 Aug	Tue Klaipeda/Lithuania ⚏
16 Aug	Wed Riga/Latvia ⚏
17 Aug	Thu Relaxation at sea
18 Aug	Fri Helsinki/Finland
19 Aug	Sat St Petersburg/Russia Overnight stay on board
20 Aug	Sun St Petersburg Individual travel arrangements from St Petersburg





Golf & Cruise voyage

MS EUROPA 2  
UNPLUGGED®



For more information on this cruise,  
please visit [www.hl-cruises.com/EUX2318](http://www.hl-cruises.com/EUX2318)

# CRUISE PRICES

CRUISE NO.	EUX2318		
HARBOUR – HARBOUR	Hamburg – St Petersburg		
TRAVEL DATES	11 Aug – 20 Aug 2023 9 days		
Special travel information	Golf & Cruise voyage 		Family cruise 
Price per person in	euros (EUR)	US dollars (USD)	pounds sterling (GBP)
	cruise only	cruise only	cruise only
Veranda Suite <sup>1</sup> or Ocean Suite <sup>1</sup> , Cat. 1, 35 m <sup>2</sup> (376 ft <sup>2</sup> )	5,790	6,660	5,100
Veranda Suite <sup>1</sup> or Ocean Suite <sup>1</sup> , Cat. 2, 35 m <sup>2</sup> (376 ft <sup>2</sup> )	6,290	7,240	5,540
Veranda Suite <sup>1</sup> or Ocean Suite <sup>1</sup> for single occupancy, Cat. 1–2	7,840	9,020	6,900
Veranda Suite <sup>1</sup> or Ocean Suite <sup>1</sup> , Cat. 3, 35 m <sup>2</sup> (376 ft <sup>2</sup> )	6,940	7,990	6,110
Veranda Suite <sup>1</sup> or Ocean Suite <sup>1</sup> , Cat. 4, 35 m <sup>2</sup> (376 ft <sup>2</sup> )	7,240	8,330	6,380
Veranda Suite <sup>1</sup> or Ocean Suite <sup>1</sup> for single occupancy, Cat. 3–4	9,320	10,720	8,210
Veranda Suite, Cat. 5, 35 m <sup>2</sup> (376 ft <sup>2</sup> )	7,840	9,020	6,900
Grand Ocean Suite, Cat. 6, 52 m <sup>2</sup> (560 ft <sup>2</sup> )	10,210	11,750	8,990
Grand Ocean Suite, Cat. 7, 52 m <sup>2</sup> (560 ft <sup>2</sup> )	10,870	12,510	9,570
Penthouse Suite, Cat. 8, 52 m <sup>2</sup> (560 ft <sup>2</sup> )	12,170	14,000	10,710
Penthouse Suite, Cat. 9, 52 m <sup>2</sup> (560 ft <sup>2</sup> )	13,480	15,510	11,870
Grand Penthouse Suite, Cat. 10, 88 m <sup>2</sup> (948 ft <sup>2</sup> )	19,420	22,340	17,090
Owner Suite, Cat. 11, 114 m <sup>2</sup> (1,227 ft <sup>2</sup> )	24,230	27,870	21,330
Family Apartment, Cat. 12, 2x 27 m <sup>2</sup> (290 ft <sup>2</sup> )	7,240	8,330	6,380
Penthouse Suite, for disabled guests, Cat. 13, 52 m <sup>2</sup> (560 ft <sup>2</sup> )	10,210	11,750	8,990
Extra bed for 3rd person, Cat. 14	3,970	4,570	3,500
Guaranteed Veranda/Ocean Suite <sup>2</sup> , Cat. 0, 35 m <sup>2</sup> (376 ft <sup>2</sup> )	5,490	6,320	4,840

Exchange rates: USD 1.15 = EUR 1.00, GBP 0.88 = EUR 1.00  
All dimensions apply including the veranda.

## THE CRUISE PRICE (CRUISE ONLY) INCLUDES THE FOLLOWING, A. O.:

- Full board: breakfast, late risers breakfast, lunch and dinner, afternoon tea and coffee with pastries, midnight snack.
- 24-hour suite service.
- A mini bar in the suite with soft drinks and beer (refilled daily).
- A different entertainment programme every day.
- Free use of the on-board facilities and equipment, a. o. library, sauna, fitness area, golf simulators, snorkelling equipment and bicycles (subject to official approval).
- Free use of the Internet on board (one hour per guest and day, further information at [www.hl-cruises.com/internet](http://www.hl-cruises.com/internet)).
- TV with a wide range of entertainment and information options.
- Harbour fees.
- Cancellation fee insurance.

## CRUISE-ONLY ARRANGEMENTS

Generally, all voyages are offered with our cruise-only prices. You will need to organise your own travel arrangements to the cruise departure and from the cruise arrival point. Please ask your travel agency for assistance.

## DISCOUNTS FOR CHILDREN

Also your youngest are always welcome on board the EUROPA 2 – and you can even enjoy savings:

- Children up to and including 11 years of age travel for free, children aged from 12 to 15 pay EUR 90 (USD 110/GBP 80) per night (when staying in the same suite [with an extra bed] as one or two fully-paying adults). The age of the child on the date of departure is decisive.

## GOLF & CRUISE VOYAGE

On Golf & Cruise voyages, you stop at the world's best and most beautiful greens and are overseen by PGA golf professionals. For more information visit [www.hl-cruises.com/golf-cruises](http://www.hl-cruises.com/golf-cruises).

## FAMILY CRUISE

These cruises offer excursions specially designed for children and teens, family-friendly tours, specialist childcare and attractive savings such as discounts for children.

<sup>1</sup>Please note that you can choose between a Veranda Suite and an Ocean Suite in Categories 1–4. For more information please visit [www.hl-cruises.com/ms-europa-2/living](http://www.hl-cruises.com/ms-europa-2/living).

<sup>2</sup>You pay only the guaranteed price for double occupancy shown here per person. Accommodation will be provided in a Veranda Suite or an Ocean Suite in Categories 1–4, subject to availability. If you book a combination of one cruise with another cruise in a Guaranteed Veranda or Ocean Suite, no combination discount will be offered and it will be necessary to change suites between the individual cruises. Continuous occupancy of the same suite throughout the cruises is not possible. You will receive your exact suite number at the time of embarkation on board (limited allotment).

Be inspired at [www.hl-cruises.com](http://www.hl-cruises.com) and [www.facebook.com/hlcruises](https://www.facebook.com/hlcruises).

Book now: on our website or by phone +49 40 30703070, Hapag-Lloyd Cruises, a TUI Cruises GmbH company, Heidenkampsweg 58, 20097 Hamburg, Germany, via email [service@hl-cruises.com](mailto:service@hl-cruises.com), and at your travel agency.

**Free phone:** Belgium 0800 79421 · Netherlands 08000 220459 · United Kingdom 08000 513829 · USA 877 4457447 or 800 3342724

# MS EUROPA 2

## THE MOST BEAUTIFUL SIDES OF NORWAY.

FROM BERGEN TO HAMBURG

06 SEP – 15 SEP 2023 | 9 DAYS | EUX2321

The Nordfjord, the famous Geirangerfjord or the picturesque Svartisen glacier: on this cruise with the EUROPA 2, experience the magnificent landscape panoramas in Norway's fjord and mountain world as well as the multifaceted art and cultural scene in Trondheim.

### ITINERARY

⚓ = at anchor

		Individual travel arrangements to Bergen
06 Sep	Wed	Bergen/Norway
07 Sep	Thu	Hellesylt/Sunnylvenfjord/Norway ⚓ Geiranger/Geirangerfjord/Norway ⚓
08 Sep	Fri	Kristiansund/Norway
09 Sep	Sat	Trondheim/Norway
10 Sep	Sun	Svartisen/Holandsfjord/Norway ⚓
11 Sep	Mon	Leknes/Lofoten/Norway
12 Sep	Tue	Relaxation at sea
13 Sep	Wed	Alesund/Norway
14 Sep	Thu	Relaxation at sea
15 Sep	Fri	Hamburg/Germany Individual travel arrangements from Hamburg



For more information on this cruise, please visit [www.hl-cruises.com/EUX2321](http://www.hl-cruises.com/EUX2321)

# CRUISE PRICES

CRUISE NO.	EUX2321		
HARBOUR – HARBOUR	Bergen – Hamburg		
TRAVEL DATES	06 Sep – 15 Sep 2023 9 days		
Price per person in	euros (EUR) cruise only	US dollars (USD) cruise only	pounds sterling (GBP) cruise only
Veranda Suite <sup>1</sup> or Ocean Suite <sup>1</sup> , Cat. 1, 35 m <sup>2</sup> (376 ft <sup>2</sup> )	5,790	6,660	5,100
Veranda Suite <sup>1</sup> or Ocean Suite <sup>1</sup> , Cat. 2, 35 m <sup>2</sup> (376 ft <sup>2</sup> )	6,260	7,200	5,510
Veranda Suite <sup>1</sup> or Ocean Suite <sup>1</sup> for single occupancy, Cat. 1–2	7,800	8,970	6,870
Veranda Suite <sup>1</sup> or Ocean Suite <sup>1</sup> , Cat. 3, 35 m <sup>2</sup> (376 ft <sup>2</sup> )	6,910	7,950	6,090
Veranda Suite <sup>1</sup> or Ocean Suite <sup>1</sup> , Cat. 4, 35 m <sup>2</sup> (376 ft <sup>2</sup> )	7,210	8,300	6,350
Veranda Suite <sup>1</sup> or Ocean Suite <sup>1</sup> for single occupancy, Cat. 3–4	9,290	10,690	8,180
Veranda Suite, Cat. 5, 35 m <sup>2</sup> (376 ft <sup>2</sup> )	7,800	8,970	6,870
Grand Ocean Suite, Cat. 6, 52 m <sup>2</sup> (560 ft <sup>2</sup> )	10,180	11,710	8,960
Grand Ocean Suite, Cat. 7, 52 m <sup>2</sup> (560 ft <sup>2</sup> )	10,830	12,460	9,540
Penthouse Suite, Cat. 8, 52 m <sup>2</sup> (560 ft <sup>2</sup> )	12,140	13,970	10,690
Penthouse Suite, Cat. 9, 52 m <sup>2</sup> (560 ft <sup>2</sup> )	13,440	15,460	11,830
Grand Penthouse Suite, Cat. 10, 88 m <sup>2</sup> (948 ft <sup>2</sup> )	19,380	22,290	17,060
Owner Suite, Cat. 11, 114 m <sup>2</sup> (1,227 ft <sup>2</sup> )	24,200	27,830	21,300
Family Apartment, Cat. 12, 2x 27 m <sup>2</sup> (290 ft <sup>2</sup> )	7,210	8,300	6,350
Penthouse Suite, for disabled guests, Cat. 13, 52 m <sup>2</sup> (560 ft <sup>2</sup> )	10,180	11,710	8,960
Extra bed for 3rd person, Cat. 14	3,940	4,540	3,470
Guaranteed Veranda/Ocean Suite <sup>2</sup> , Cat. 0, 35 m <sup>2</sup> (376 ft <sup>2</sup> )	5,490	6,320	4,840

Exchange rates: USD 1.15 = EUR 1.00, GBP 0.88 = EUR 1.00  
All dimensions apply including the veranda.

## THE CRUISE PRICE (CRUISE ONLY) INCLUDES THE FOLLOWING, A. O.:

- Full board: breakfast, late risers breakfast, lunch and dinner, afternoon tea and coffee with pastries, midnight snack.
- 24-hour suite service.
- A mini bar in the suite with soft drinks and beer (refilled daily).
- A different entertainment programme every day.
- Free use of the on-board facilities and equipment, a. o. library, sauna, fitness area, golf simulators, snorkelling equipment and bicycles (subject to official approval).
- Free use of the Internet on board (one hour per guest and day, further information at [www.hl-cruises.com/internet](http://www.hl-cruises.com/internet)).
- TV with a wide range of entertainment and information options.
- Harbour fees.
- Cancellation fee insurance.

## CRUISE-ONLY ARRANGEMENTS

Generally, all voyages are offered with our cruise-only prices. You will need to organise your own travel arrangements to the cruise departure and from the cruise arrival point. Please ask your travel agency for assistance.

## DISCOUNTS FOR CHILDREN

Also your youngest are always welcome on board the EUROPA 2 – and you can even enjoy savings:

- Children up to and including 11 years of age travel for free, children aged from 12 to 15 pay EUR 90 (USD 110/GBP 80) per night (when staying in the same suite [with an extra bed] as one or two fully-paying adults). The age of the child on the date of departure is decisive.

<sup>1</sup>Please note that you can choose between a Veranda Suite and an Ocean Suite in Categories 1–4. For more information please visit [www.hl-cruises.com/ms-europa-2/living](http://www.hl-cruises.com/ms-europa-2/living).

<sup>2</sup>You pay only the guaranteed price for double occupancy shown here per person. Accommodation will be provided in a Veranda Suite or an Ocean Suite in Categories 1–4, subject to availability. If you book a combination of one cruise with another cruise in a Guaranteed Veranda or Ocean Suite, no combination discount will be offered and it will be necessary to change suites between the individual cruises. Continuous occupancy of the same suite throughout the cruises is not possible. You will receive your exact suite number at the time of embarkation on board (limited allotment).

Be inspired at [www.hl-cruises.com](http://www.hl-cruises.com) and [www.facebook.com/hlcruises](https://www.facebook.com/hlcruises).

Book now: on our website or by phone +49 40 30703070, Hapag-Lloyd Cruises, a TUI Cruises GmbH company, Heidenkampsweg 58, 20097 Hamburg, Germany, via email [service@hl-cruises.com](mailto:service@hl-cruises.com), and at your travel agency.

**Free phone:** Belgium 0800 79421 · Netherlands 08000 220459 · United Kingdom 08000 513829 · USA 877 4457447 or 800 3342724

