



ALASKA
& RUSSIAN FAR EAST



Fox, Russian Far East



2019 / 2020
NEW ITINERARIES

WHY SILVERSEA

Silversea is committed to making your voyage unforgettable. And that not only means taking you to the most beautiful and hard to reach destinations on the planet, it means taking you there in the comfort and elegance that you deserve.

At Silversea we believe that nothing can rival the wonder of our world. Our curious minds propel us not just to keep exploring our magnificent planet but mostly to experience it. Our mission is to unlock the most amazing experiences and destinations, and deliver them to you in superlative comfort and luxury.

We will never stop searching for the unique, the bold, the bizarre and the beautiful. You can be secure in the knowledge that the flame of our explorer spirit will never go out. Because at the end of the day, we are all travellers, itching with wanderlust, eager to discover what is still left out there.

*“We travel not to escape life,
but for life not to escape us”*

ANONYMOUS

MANFREDI LEFEBVRE D'OVIDIO

Executive Chairman Silversea Cruises

Nothing is as thrilling to me as the anticipation of travel. Whether it is planning, packing or boarding one of our vessels, travelling always reminds me of when I was a child, eager to explore the world. Getting older, that curiosity is still alive. I am still looking at how I can increase my collection of places and cultures.

For me today, there is only one way to travel and that is to travel in luxury and comfort. I am amazingly fortunate because Silversea allows me, as well as many other travellers, to visit the remotest corners of the world, in superb comfort.

But how do I define luxury? Luxury is authenticity, or experience over appearance. It is drinking in the beauty of the world at the highest possible comfort level. It means exclusivity. It means immersion. It is about creating the wonder that we felt as children. It is taking the time to care for you. That is real luxury; for me and for Silversea.

*“Travelling the world is relatively easy
nowadays, but to do it in superlative luxury?
This can only be done with Silversea”*



CHAIRMAN OF SILVERSEA CRUISES





*“When I hear people say that there are no blank
spaces left on the map, no uncharted seas
or shores to discover, nothing new to explore,
I can’t believe it”*

AN EXPLORER AT HEART

*Conrad Combrink / SVP Strategic Development
Expeditions and Experiences*

When we launched Silversea Expeditions, it was met with a certain amount of scepticism. No one believed that we could combine an expedition product with the luxury that Silversea was known for. As our fleet continues to expand, and with the addition of Zodiacs® on our larger ships and the first ever World Cruise to visit Antarctica, I believe our vision proved to be correct. Since Silversea Expeditions' birth, not only have notoriously hard to reach and difficult places become cornerstones of our product, but we have striven to cover every inch of coastline possible. Because to me, modern exploration is about putting places on the map you did not know existed; and delivering them to you in luxury.

The world is constantly changing and we need to continuously evolve our product. This is why we launched the Couture Collection last year. 2019-2020 brings us even more new and exciting land opportunities, such as Silversea Experiences and the new Signature Programmes. I believe that now Silversea has conquered the seas, it can conquer the land. After all, over 71% of our beautiful planet is covered by water; there is still almost another 30% left to discover.

SILVERSEA DIFFERENCE

Silversea's small luxury ships are designed for those who delight in the thrill of discovery while indulging mind and body in the most lavish surroundings imaginable. All accommodations are spacious, ocean-view suites that include butler service, and most include private verandas. Silversea voyages and cruise expeditions sail to over 900 destinations on all seven continents, more than any other cruise line.

*Travel
Deeper*

For almost 25 years, we have been offering travel experiences that resonate on a deeper emotional level than most. 2019-2020 sees us showcasing voyages that are more adventurous, more personalised, and more attuned to local culture, inspiring you toward a path of total destination immersion.

*Intimate
Small Ships*

Big enough for everything you need, yet small enough to remain personal. Our ships range in size from 50 to 304 suites to ensure each of our guests finds the perfect balance between choice and intimacy.

*Over 900
Destinations*

Awarded many times over, our itineraries are probably the best in the world. And when we say the world we really mean it. We will visit over 900 destinations between 2019 and 2020, so whether it is iconic cities or far flung shores, wherever you want to go, you can get there with Silversea.

*Superior
Service*

With a staff ratio of mostly 1:1 and a dedicated butler for every suite, our service remains the jewel in our crown. Devoted, discreet and experienced, these dedicated men and women are the key to turning your trip into a long-lasting memory.

*Gourmet
Excellence*

Perhaps our most talked about distinction, our innovative gourmet excellence stands head and shoulders above the rest. From fine French cuisine and delicate Asian options to relaxed Italian family-style meals, our chef's creativity knows no limits. And with 26 food choices in eight restaurants offered on Silver Muse alone, we know you will have your best gourmet experience at sea.

MAIN
INTERNATIONAL
AWARDS:

Silversea named **"Star Luxury Cruise Company"** at the Travel Bulletin Star Awards 2018 for the 12th year in a row

"Best Ultra Luxury Cruise Line"
in The inaugural TTG Luxury Awards 2018

For 2018, Silversea was named the **"Best Cruise Line for Luxury Small Ships"** for the second year in a row by Luxury Travel Advisor magazine

"Best Expedition Cruise Line"
by AFAR in 2017 and 2018

"Best Luxury Cruise Line Brand" from 2006 to 2012, as well as in 2017 and 2018, by Australia's Luxury Travel Magazine's Gold List Awards

"Best New Luxury Ship – Silver Muse" – Cruise Critic Editor's Pick 2017

Silver Muse was the recipient of 5 CruiseReport **"Editors' Choice Awards"** for 2017: Best Luxury ship, best food & dining, best accommodations, best excursions, best bar service

"Best Small Ship Cruise Line"
2017 by Condé Nast Traveller, UK

"Best for Adventure"
2016 and 2017 at the Cruise International Awards

"Best Luxury Cruise Company"
2007 to 2019 at the Travel Weekly Globe Awards, UK



Silver Whisper



OUR FLEET, OUR FUTURE

Roberto Martinoli / CEO Silversea Cruises

Our fleet is evolving. With over 900 destinations regularly visited, we are the only ultra-luxury cruise line with such a vast – and varied – portfolio. And as our focus on destination experience becomes sharper, we turn our attention towards our ships.

Over the next seven years, Silversea will see many new ships take to the seas, starting with Silver Origin in 2020: a Galápagos-dedicated ship, designed and built with the unique destination in mind. She will be quickly followed by Silver Moon. 2021 will see a further addition, Silver Dawn, followed by the Silver Evolution series in 2022 which will comprise at least two ships. This extensive growth programme builds on the success of Silver Muse and will have Silversea ships stamping its seal of understated excellence across all four corners of the globe.

Of course, this expansion will continue to build on our outstanding level of service and commitment to excellence. Silversea is, and will remain, the leader in onboard personalised service. Therefore, it is once again to all our crew to whom I turn when I say that without you and your tireless devotion, we would not be where we are today. Grazie



A SOCIETY OF FRIENDS

*Fernando Barroso de Oliveira /
Chairman's Ambassador to the Venetian Society*



This year marks a special anniversary for me as I celebrate my Silver – how apt – anniversary with Silversea. 25 years full of laughter, blue-sea days, good times and most importantly good friends. We have shared some wonderful memories together, whether on board or on shore, and I'm proud to say that this year alone I have welcomed at least 30 of you to my home in Portugal.

So it is not without some emotion that my 25th Anniversary comes in the same year that we have announced the first World Cruise to ever visit all seven continents. This to me is typical of Silversea keeping hold of its heritage while pushing its boundaries, not to mention those of the whole ultra-luxury cruising industry. Setting foot on the snowy plains of Antarctica while breaking new ground (or should I say ice?) in the cruising industry, surrounded by my family of friends? Yes, you could say I'm very lucky indeed.

*“If you have ever travelled with us, you know
what I mean. And if you are still considering your
first cruise, welcome to the family”*



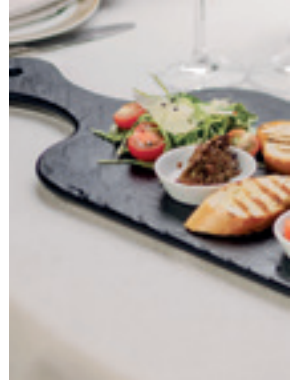
AROMATIC ARCHITECTURE

The world of food has changed. A new demand for quality has emerged – a demand for modernity rooted in tradition: simple meals, elaborately constructed using locally sourced, sustainable ingredients. With our global reputation for gastronomic excellence, 2019 sees our culinary offerings build on these philosophies to give you an even deeper destination experience. This means: using local ingredients where possible and authentic, regional recipes that reflect heritage and revamp tradition. These culinary concepts will be spread fleet-wide so that your plate reflects your port. We can choose from the entire planet's ingredients, so why wouldn't we?

We are also excited to announce that Silver Moon will feature an innovative culinary discovery centre that will see demonstrations, lectures and workshops, taking our gastronomic refinement well into the 21st century.

*“It's easy to make it complicated but complicated
to make it simple”*

JOEL ROBUCHON
32 Michelin Guide star chef







Dal Lake, Kashmir, 1996, by Steve McCurry

CAPTURING THE AUTHENTIC BEAUTY OF THE WORLD

Barbara Muckermann / CMO Silversea Cruises

The world is beautiful. Fact. Beauty can be found everywhere; we just have to open our eyes to see it. The spirit of exploration, ingrained in Silversea's DNA, is all about seeking authentic beauty in the remotest corners of the world.

Steve McCurry understands beauty. More importantly, he understands authentic beauty – not the sanitised version that the magazines sell us but the honest, pure, unembellished beauty of the world. In a fraction of a second, he is able to capture the unguarded moments that make up the tapestry of life and turn them into compelling stories. His talent for showing every facet of the world's authentic beauty is unique and infinite. Therefore, Steve's collaboration with Silversea is a natural fit. Let us take you to where that wonderful beauty is, but let him show you how to open your eyes to see it.

Perhaps it was Steve's friend, travel writer Paul Theroux, who best summed it up when he said, "It is impossible to see a Steve McCurry photograph and not to wish to be there".

Visit also www.discover.silversea.com

EXPLORE MORE ON SHORE

Are you looking for a historian to take you through the history of Easter Island? Do you need help capturing the vivid spectrum of the Antarctic? Do you want to know more about the endemic wildlife of the Galapagos, but simply don't know where to start?

Let our team of Expedition Leaders help! We have sourced the very best scholars there are: infectious enthusiastic men and women who are not only superbly qualified in their field, but who all share a passion for their subject. From biologists, naturalists and anthropologists to geologists, historians and photographers, they've got it covered. And with never more than 16 people per Zodiac, there really is no better way to get closer to the authentic beauty of the world.

Throughout 2019-2020, between 11 and 28 of our best Expedition Leaders will design and travel on a range of voyages across the fleet. From sun-drenched islands in unpronounceable archipelagos to searching the Canadian Arctic for polar bears, our Leaders will plan and accompany select trips so that they can offer the most rewarding experience possible. Educational, aspirational and, most of all, inspirational; this is truly immersive travel.





Humpback whale, Alaska



ALASKA
& RUSSIAN FAR EAST

ALASKA

Different from every other destination in the world, Alaska has something special. Misty fjords stretch further than for ever while the vistas are stuff of legends. Get into nature with the countless wildlife spotting opportunities, while the big, bold landscape works its wonders on you. With such a world of possibilities on offer, come and find yourself in the 49th State.

PRE, POST AND MID LAND ADVENTURES

ROCKY MOUNTAINEER: 4-Night post-cruise from Vancouver

Enjoy the ultimate train ride – a two day, all daylight tour of the Canadian Rockies aboard the legendary Rocky Mountaineer. Relax as the stunning vistas parade before your eyes. From the amazing beauty of the lakes and peaks of the Rockies to the rushing waters of Hell's Gate in the Fraser Canyon and gentle farm lands as you enter Vancouver. Cross the Continental Divide. See the Spiral Tunnels and Hell's Gate. Spend two nights in Banff, and an overnight in rustic Kamloops. Discover the inimitable charm of Vancouver.

NEW PORTS

Haines (USA) / Walker Cove (USA) / Rudyerd Bay, Misty Fjord (USA) / Alert Bay, British Colombia (Canada) / Seattle (USA)

REGIONAL HIGHLIGHTS

- Visit Alaska's Native Heritage & Totem Carving centre in Ketchikan
- Cruise the famous Inside Passage
- Try Dog-Sledding and Whale Watching plus a visit Mendenhall Glacier in Juneau
- Cruise the mighty Hubbard Glacier
- Discover the other Emerald Isle of Kodiak
- Enjoy some first class fishing Brown Bear spotting in Sitka
- Board the White Pass Steam Train, follow the Yukon Route and the Gold Rush in Skagway
- Discover Victoria's beautiful Butchart and Butterfly Gardens

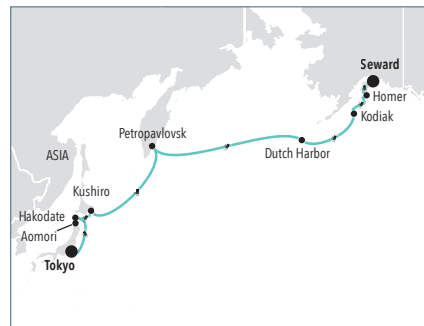
TOKYO TO SEWARD

Departure **12 May 2019**

Duration **16 days**

Silver Muse

Voyage Number **6910**



A spectacular foray into some of Asia's most intriguing locales. Engage in the ancient art of kite flying and admire the Great Wall from a helicopter. Harvest crops among locals in a Seongeup folk village. Take a high-speed train to see Kyoto's shrines, and savour the taste of sushi you prepared from fresh catches at the local market.

COUNTRIES

Japan, Russian Federation, United States of America

DAY BY DAY

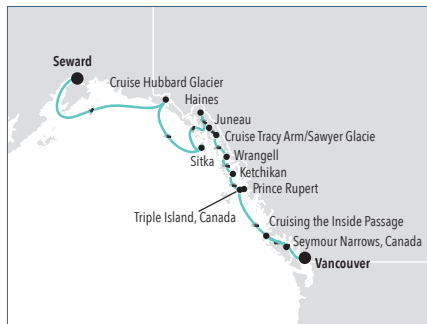
DATE	ARRIVE	DEPART
12 May TOKYO	07:00	
13 May TOKYO		18:00
14 May DAY AT SEA		
15 May AOMORI	8:00	22:00
16 May HAKODATE	8:00	17:00
17 May KUSHIRO	8:00	17:00
18 May DAY AT SEA		
19 May DAY AT SEA		
20 May PETROPAPLOVSK (KAMCHATSKY)	7:00	18:00
21 May DAY AT SEA		
21 May DATE LINE GAIN A DAY		
22 May DAY AT SEA		
23 May DUTCH HARBOR	8:00	14:00
24 May DAY AT SEA		
25 May KODIAK	8:00	19:00
26 May HOMER	8:00	17:00
27 May SEWARD	7:00	

Whale Watching Voyage

SEWARD TO VANCOUVER

Departure **27 May 2019**
Duration **10 days**

Silver Muse
Voyage Number **6911**



Experience spine-tingling encounters with the rulers of the deep. An unrivalled opportunity to experience the awe and excitement of sighting the ocean's most majestic creatures with your very own eyes. This cruise not only brings you enriching, unforgettable experiences, but actively involves you in safeguarding the future of the wonderful species you encounter. Cruising Alaska will never seem the same again.

COUNTRIES

United States of America, Canada

DAY BY DAY

DATE	ARRIVE	DEPART
27 May SEWARD		19:00
28 May CRUISE HUBBARD GLACIER	13:30	17:30
29 May SITKA,	09:00	16:00
30 May HAINES	08:00	18:00
31 May JUNEAU	08:00	23:00
01 Jun TRACY ARM/SAWYER GLACIER	07:30	17:00
02 Jun WRANGELL	09:00	18:00
03 Jun KETCHIKAN	08:00	18:00
04 Jun PRINCE RUPERT	08:00	18:00
04 Jun TRIPLE ISLAND	21:00	21:00
05 Jun PINE ISLAND	12:00	12:00
05 Jun SEYMOUR NARROWS	19:45	19:45
06 Jun VANCOUVER	08:00	

Whale Watching Voyage

VANCOUVER TO VANCOUVER

Departure **06 Jun 2019**
Duration **11 days**

Silver Muse
Voyage Number **6912**



This is the Alaska of your imagination: tranquil fjords, freezing glaciers, jagged peaks and evergreen forests; endemic wildlife and gold-rush-era towns bursting with character. Yet there is more than just outer beauty here; dig a little deeper, and experience the rich history and unique cultures of the people who have thrived here from long before Bering's discovery in 1741.

COUNTRIES

Canada, United States of America

DAY BY DAY

DATE	ARRIVE	DEPART
06 Jun VANCOUVER		18:00
07 Jun SEYMOUR NARROWS	02:50	02:50
07 Jun PINE ISLAND	12:30	12:30
08 Jun TRIPLE ISLAND	03:00	03:00
08 Jun KETCHIKAN	08:00	17:00
09 Jun SITKA	12:00	19:00
10 Jun HAINES	12:00	20:00
11 Jun JUNEAU	07:00	17:00
12 Jun WRANGELL	09:00	18:00
13 Jun WALKER COVE	06:00	10:00
13 Jun RUDYERD BAY	12:30	17:00
14 Jun PRINCE RUPERT	06:00	17:00
15 Jun PINE ISLAND	11:00	11:00
15 Jun SEYMOUR NARROWS	23:00	23:00
16 Jun NANAIMO	08:00	22:00
17 Jun VANCOUVER	08:00	

VANCOUVER TO VANCOUVER

Departure **17 Jun 2019**
Duration **10 days**

Silver Muse
Voyage Number **6913**



Enjoy watching pods of Humpback Whales feeding on Herring and strolling along the beach for a salmon barbeque, this is a voyage to delight both the eyes and tastebuds. Savour the Russian influenced town of Sitka before cruising the Hubbard Glacier and finally disembarking in beautiful Seward, home of Alaska's oldest community.

COUNTRIES

Canada, United States of America

DAY BY DAY

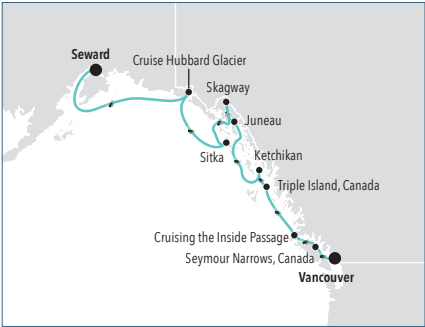
DATE	ARRIVE	DEPART
17 Jun VANCOUVER		18:00
18 Jun SEYMOUR NARROWS	05:40	05:40
18 Jun PINE ISLAND	13:00	13:00
19 Jun TRIPLE ISLAND	03:00	03:00
19 Jun KETCHIKAN	08:00	17:00
20 Jun SITKA, ALASKA	12:00	19:00
21 Jun HAINES	12:00	20:00
22 Jun JUNEAU	07:00	17:00
23 Jun WRANGELL	09:00	18:00
24 Jun WALKER COVE	06:00	10:00
24 Jun RUDYERD BAY	12:30	17:00
25 Jun PRINCE RUPERT	06:00	17:00
26 Jun PINE ISLAND	11:00	11:00
26 Jun SEYMOUR NARROWS	19:00	19:00
27 Jun VANCOUVER	08:00	

VANCOUVER TO SEWARD

Departure **27 Jun 2019**
Duration **7 days**

OTHER
DEPARTURE DATES

Silver Muse
Voyage Number **6914**



VOYAGE NUMBER	DEPARTURE DATES
6918	25 Jul 2019
6920	8 Aug 2019
6922	22 Aug 2019
6924	5 Sep 2019

Whether you choose to marvel at the horizons topped by the snowy heights from your raft on the Chilkat River or to hold your breath at the stupendous beauty of the Hubbard Glacier, the frozen landscape will overwhelm and astonish as you cruise through the gulf of Alaska. This is a journey of breath-taking encounters with the natural world.

COUNTRIES

United States of America, Canada

DAY BY DAY

DATE		ARRIVE	DEPART
27 Jun	VANCOUVER		18:00
28 Jun	SEYMOUR NARROWS	01:30	01:30
28 Jun	PINE ISLAND	12:00	12:00
29 Jun	TRIPLE ISLAND	03:00	03:00
29 Jun	KETCHIKAN	07:30	14:00
30 Jun	JUNEAU	08:00	17:00
01 Jul	SKAGWAY	11:30	20:00
02 Jul	SITKA	09:00	18:00
03 Jul	CRUISE HUBBARD GLACIER	08:00	12:00
04 Jul	SEWARD	07:00	



Totem poles in Stanley Park, Vancouver

SEWARD TO VANCOUVER

Departure **04 Jul 2019**

Duration **7 days**

OTHER DEPARTURE DATES

Silver Muse

Voyage Number **6915**



VOYAGE NUMBER	DEPARTURE DATES
6917	18 Jul 2019
6919	1 Aug 2019
6921	15 Aug 2019
6923	29 Aug 2019

From bustling Vancouver to one of Alaska's oldest and most scenic communities, explore the vast, wild wilderness that is a different type of American dream. Wonderfully silent, superbly vivid and a joy for nature lovers and outdoor enthusiasts alike, this is where snow-capped mountains, and brown bears reign supreme. This voyage proves that America's 49th state is much more than gold rush and glaciers.

COUNTRIES

United States of America, Canada

DAY BY DAY

DATE		ARRIVE	DEPART
04 Jul	SEWARD		19:00
05 Jul	CRUISE HUBBARD GLACIER	13:30	17:30
06 Jul	JUNEAU	08:30	22:30
07 Jul	SKAGWAY	08:00	17:30
08 Jul	SITKA	10:15	16:00
09 Jul	KETCHIKAN	08:00	15:00
09 Jul	TRIPLE ISLAND	21:30	21:30
10 Jul	PINE ISLAND	12:00	12:00
10 Jul	SEYMOUR NARROWS	18:20	18:20
11 Jul	VANCOUVER	08:00	



Brown bear, Alaska

ALASKA & THE RUSSIAN FAR EAST

Travel in the wake of Vitus Bering and drink in the startlingly beautiful landscapes of Alaska and the Russian Far East: massive glaciers, evergreen forests, serrated peaks and placid fjords are just the beginning. Travel far from the tourist highway and find the fascinating culture of a region that has been barely touched by human hand. Yet it is the stunning wildlife here that is the most compelling: from brown bears to Bald Eagles, these are the true stars of the show.

PRE, POST AND MID LAND ADVEN-

DENALI - THE SUMMIT OF NORTH AMERICA:
4-Night post cruise

North America's highest point watches over its country, imposing, magnificent, infinite. Mountains tower over this remote wilderness, creating a cold stillness over the tundra. Teeming with wildlife, experience for yourself this majestic place. Include a train ride on the famous Alaska Railroad and your 4-night post cruise is complete.

REGIONAL HIGH-

Travel the famous Inside Passage

Cruise by the spectacular Hubbard Glacier

Follow the footsteps of the Gold Rush in Skagway

Discover Alaska's native heritage in Ketchikan

See brown bears in Kamchatka and Katmai National Park, Alaska

Take a Zodiac into the spectacular caldera of Yankicha

Meet different indigenous groups in the Russian Far East's Chukotka

Traverse across the Siberian Sea in the wake of great explorers

VANCOUVER TO SEWARD

Departure 28 May 2020

Duration 7 Days

Silver Muse



COUNTRIES: Canada, United States of America

DAY BY DAY		
DATE	ARRIVE	DEPART
28 May VANCOUVER		18:00
29 May CRUISING THE INSIDE PASSAGE		
29 May CRUISING THE INSIDE PASSAGE		
30 May CRUISING THE INSIDE PASSAGE		
30 May KETCHIKAN	08:00	14:00
31 May JUNEAU	09:30	23:00
01 Jun SKAGWAY	08:00	17:00
02 Jun SITKA	08:30	16:00
03 Jun CRUISE HUBBARD GLACIER		

OTHER DEPARTURE DATES

DEPARTURE DATES

11 Jun 2020

SEWARD TO VANCOUVER

Departure 04 Jun 2020

Duration 7 Days

Silver Muse



COUNTRIES: United States of America, Canada

DAY BY DAY		
DATE	ARRIVE	DEPART
04 Jun SEWARD		19:00
05 Jun CRUISE HUBBARD GLACIER	13:30	17:30
06 Jun JUNEAU	09:30	22:30
07 Jun SKAGWAY	08:00	16:00
08 Jun SITKA	08:00	16:30
09 Jun KETCHIKAN	08:00	16:30
09 Jun CRUISING THE INSIDE PASSAGE		
10 Jun CRUISING THE INSIDE PASSAGE		
10 Jun CRUISING THE INSIDE PASSAGE		

OTHER DEPARTURE DATES

DEPARTURE DATES

18 Jun 2020



OTARU TO OTARU

Departure 18 Jun 2020
Duration 18 Days

Silver Explorer



COUNTRIES: Japan, Russian Federation

DAY BY DAY		
DATE	ARRIVE	DEPART
18 Jun OTARU		17:00
19 Jun KORSAKOV	14:00	
20 Jun KORSAKOV		14:00
21 Jun TYULENIY ISLAND	9:30	14:00
22 Jun PILTUN LAGOON	13:30	19:00
23 Jun IONA ISLAND	13:30	18:30
24 Jun OKHOTSK	10:30	19:00
25 Jun YEGHINEYSKAYA BAY	6:30	11:30
25 Jun USHKI	15:00	18:30
26 Jun TALAN ISLAND	7:00	12:00
26 Jun ZAVYAVIALOVA ISLAND	17:00	20:00
27 Jun DAY AT SEA		
28 Jun OPALA RIVER	12:30	18:30
29 Jun UTASHUD ISLAND	6:00	9:30
29 Jun KEKURNYY POINT	16:30	19:30
30 Jun SHUMSHU ISLAND	8:00	11:00
30 Jun ATLASOVA ISLAND	14:00	21:00
01 Jul NEMO	7:00	12:00
01 Jul KRENITSYNA POINT	15:00	18:00
02 Jul YANKICHA ISLAND	6:30	22:00
03 Jul CHIRPOY ISLAND	7:00	22:00
04 Jul DAY AT SEA		
05 Jul DAY AT SEA	8:00	12:00
06 Jul OTARU	8:00	

VANCOUVER TO SEWARD

Departure 25 Jun 2020
Duration 7 Days

Silver Muse



COUNTRIES: Canada, United States of America

DAY BY DAY		
DATE	ARRIVE	DEPART
25 Jun VANCOUVER		18:00
26 Jun CRUISING THE INSIDE PASSAGE		
26 Jun CRUISING THE INSIDE PASSAGE		
27 Jun CRUISING THE INSIDE PASSAGE		
27 Jun KETCHIKAN	08:00	14:30
28 Jun JUNEAU	09:30	23:00
29 Jun SKAGWAY	08:00	16:00
30 Jun SITKA	08:30	17:00
01 Jul CRUISE HUBBARD GLACIER	08:00	12:00
OTHER DEPARTURE DATES		
DEPARTURE DATES		
09 Jul 2020		
23 Jul 2020		
06 Aug 2020		
20 Aug 2020		
03 Sep 2020		

SEWARD TO VANCOUVER

Departure 02 Jul 2020
Duration 7 Days

Silver Muse



COUNTRIES: United States of America, Canada

DAY BY DAY		
DATE	ARRIVE	DEPART
02 Jul SEWARD		19:00
03 Jul CRUISE HUBBARD GLACIER	13:30	17:30
04 Jul JUNEAU	09:30	22:30
05 Jul SKAGWAY	08:00	16:00
06 Jul SITKA	08:00	16:30
07 Jul KETCHIKAN	08:00	16:30
07 Jul CRUISING THE INSIDE PASSAGE		
08 Jul CRUISING THE INSIDE PASSAGE		
08 Jul CRUISING THE INSIDE PASSAGE		
09 Jul VANCOUVER	08:00	
OTHER DEPARTURE DATES		
DEPARTURE DATES		
16 Jul 2020		

OTARU TO SEWARD

Departure 06 Jul 2020
Duration 18 Days

Silver Explorer



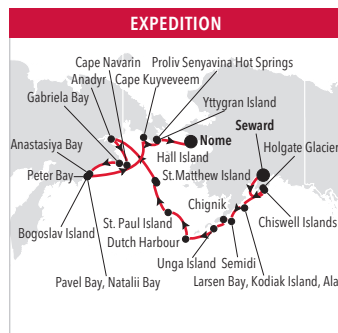
COUNTRIES: Japan, Russian Federation,

DAY BY DAY		
DATE	ARRIVE	DEPART
06 Jul OTARU		16:00
07 Jul KORSAKOV	14:00	20:00
08 Jul TYULENIY ISLAND	15:30	20:30
09 Jul DAY AT SEA		
10 Jul YANKICHA ISLAND	06:30	17:00
11 Jul ATLASOVA ISLAND	14:30	21:00
12 Jul UTASHUD ISLAND	08:00	16:00
13 Jul PETROPAVLOVSK	05:30	17:00
14 Jul DAY AT SEA		
14 Jul ATTU ISLAND	08:00	17:00
15 Jul KISKA HARBOR	09:00	19:00
16 Jul DAY AT SEA		
17 Jul SEGUAM ISLAND	05:30	10:30
18 Jul DUTCH HARBOR	08:00	12:00
19 Jul UNGA ISLAND	15:00	19:30
20 Jul CASTLE BAY	07:30	13:00
21 Jul LARSEN BAY	07:30	17:45
22 Jul CHISWELL ISLANDS	12:30	18:00
22 Jul HOLGATE GLACIER	19:15	19:15
23 Jul SEWARD	06:30	

SEWARD TO NOME

Departure 23 Jul 2020

Duration 18 Days

Silver Explorer

COUNTRIES: United States of America, Russian Federation

DAY BY DAY		
DATE	ARRIVE	DEPART
23 Jul SEWARD		20:00
24 Jul HOLGATE GLACIER	05:30	05:30
24 Jul CHISWELL ISLANDS	13:30	17:00
25 Jul LARSEN BAY	08:30	18:30
26 Jul SEMIDI ISLANDS	07:30	11:00
27 Jul CHIGNIK	17:00	20:00
28 Jul UNGA ISLAND	07:30	11:30
29 Jul DUTCH HARBOR	09:00	12:30
30 Jul ST PAUL ISLAND	09:30	12:30
31 Jul ST MATTHEW ISLAND	08:30	12:30
31 Jul HALL ISLAND	14:30	20:30
01 Aug DATE LINE LOSE A DAY		
03 Aug ANADYR	06:30	17:00
04 Aug GABRIELA BAY	08:30	11:30
04 Aug CAPE NAVARIN	14:30	20:30
05 Aug ANASTASIYA BAY	12:30	22:00
06 Aug PETER BAY	05:30	10:00
06 Aug BOGOSLAV ISLAND	11:15	14:00
06 Aug PAVEL BAY	14:45	23:30
07 Aug DAY AT SEA		
08 Aug CAPE KUYVEEEM	13:30	19:00
09 Aug PROLIV SENYAVINA HOT SPRINGS	06:30	12:30
09 Aug YTTYGRAN ISLAND	14:15	20:00
10 Aug DAY AT SEA		

SEWARD TO VANCOUVER

Departure 30 Jul 2020

Duration 7 Days

Silver Muse

COUNTRIES: United States of America, Canada

DAY BY DAY		
DATE	ARRIVE	DEPART
30 Jul SEWARD		19:00
31 Jul CRUISE HUBBARD GLACIER	13:30	17:30
01 Aug JUNEAU	09:30	22:30
02 Aug SKAGWAY	08:00	16:00
03 Aug SITKA	08:00	16:30
04 Aug KETCHIKAN	08:00	16:00
04 Aug CRUISING THE INSIDE PASSAGE		
05 Aug CRUISING THE INSIDE PASSAGE		
05 Aug CRUISING THE INSIDE PASSAGE		
06 Aug VANCOUVER	08:00	

NOME TO NOME

Departure 10 Aug 2020

Duration 12 Days

Silver Explorer

COUNTRIES: United States of America, Russian Federation

DAY BY DAY		
DATE	ARRIVE	DEPART
10 Aug NOME		17:00
11 Aug DATE LINE LOSE A DAY		
12 Aug PROVIDENIYA	10:30	20:00
13 Aug DAY AT SEA		
14 Aug MEYNYPILGNO	06:00	17:00
15 Aug ANASTASIYA BAY	07:30	14:00
16 Aug DAY AT SEA		
17 Aug TYMLAT	06:30	17:00
18 Aug YUZH NAYA GLUBOKAYA	08:00	12:00
18 Aug LAVROVA BAY	14:30	18:00
19 Aug PETER BAY	05:30	10:00
19 Aug BOGOSLAV ISLAND	11:15	14:00
20 Aug DAY AT SEA		
21 Aug YTTYGRAN ISLAND	08:30	12:30
21 Aug PROLIV SENYAVINA HOT SPRINGS	14:15	20:00
22 Aug DAY AT SEA		
22 Aug DATE LINE GAIN A DAY		
22 Aug NOME	08:30	

SEWARD TO VANCOUVER

Departure 13 Aug 2020

Duration 7 Days

Silver Muse

COUNTRIES: United States of America, Canada

DAY BY DAY		
DATE	ARRIVE	DEPART
13 Aug SEWARD		19:00
14 Aug CRUISE HUBBARD GLACIER	13:30	17:30
15 Aug JUNEAU	09:30	22:30
16 Aug SKAGWAY	08:00	16:00
17 Aug SITKA	08:00	16:30
18 Aug KETCHIKAN	08:00	15:30
18 Aug CRUISING THE INSIDE PASSAGE		
19 Aug CRUISING THE INSIDE PASSAGE		
OTHER DEPARTURE DATES		

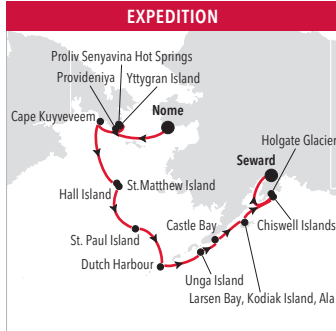
DEPARTURE DATES

27 Aug 2020

NOME TO SEWARD

Departure 14 Sep 2020
Duration 12 Days

Silver Cloud



COUNTRIES: United States of America, Russian Federation

DAY BY DAY		
DATE	ARRIVE	DEPART
14 Sep	NOME	18:00
15 Sep	DATE LINE LOSE A DAY	
16 Sep	PROVIDENIYA	12:00 20:00
17 Sep	PROLIV SENYAVINA HOT SPRINGS	06:30 11:00
17 Sep	YTTYGRAN ISLAND	13:00 18:30
18 Sep	CAPE KUYVEEEM	06:30 11:00
18 Sep	DATE LINE GAIN A DAY	
19 Sep	HALL ISLAND	06:00 10:30
19 Sep	ST MATTHEW ISLAND	13:00 17:00
20 Sep	ST PAUL ISLAND	12:45 17:30
21 Sep	DUTCH HARBOR	13:00 18:30
22 Sep	UNGA ISLAND	13:00 19:30
23 Sep	CASTLE BAY	07:30 13:00
24 Sep	LARSEN BAY	07:30 18:00
25 Sep	CHISWELL ISLANDS	12:30 18:00
25 Sep	HOLGATE GLACIER	
26 Sep	SEWARD	06:30

SEWARD TO VANCOUVER

Departure 26 Sep 2020
Duration 12 Days

Silver Cloud



COUNTRIES: United States of America, Canada

DAY BY DAY		
DATE	ARRIVE	DEPART
26 Sep	SEWARD	17:00
27 Sep	CAPE ST. ELIAS	06:00 11:30
27 Sep	ICY BAY	21:30 22:30
28 Sep	CRUISE HUBBARD GLACIER	09:00 14:00
29 Sep	ELFIN COVE	08:00 14:00
29 Sep	CRUISE POINT ADOLPHUS	16:30 19:00
30 Sep	SITKA	06:00 16:00
01 Oct	WRANGELL	09:00 17:00
02 Oct	CRUISE BEHM CANAL	06:00 07:00
02 Oct	RUDYERD BAY	12:00 23:00
03 Oct	METLAKATLA	06:30 17:00
04 Oct	PRINCE RUPERT	06:30 12:30
05 Oct	KLEMTU	07:00 13:00

♥ VENETIAN SOCIETY

VANCOUVER TO SAN DIEGO

Departure 08 Oct 2020
Duration 9 Days

Silver Cloud



COUNTRIES: Canada, United States of America

DAY BY DAY		
DATE	ARRIVE	DEPART
08 Oct	VANCOUVER	17:00
09 Oct	VICTORIA	07:00 23:00
10 Oct	SEATTLE	07:00 23:00
11 Oct	DAY AT SEA	
12 Oct	PORTLAND	07:00 23:00
13 Oct	LONGVIEW	07:00 14:00
14 Oct	DAY AT SEA	
15 Oct	SAN FRANCISCO	09:00 22:00
16 Oct	DAY AT SEA	
17 Oct	SAN DIEGO	07:00

♥ VENETIAN SOCIETY



CALL OUR RESERVATION TEAM

OR YOUR TRAVEL AGENT

ASIA	+65 623 7066
AUSTRALIA	+1300 306 872
AUSTRIA	+43 1 928 7897
BELGIUM	+32 2 401 1432
DENMARK	+45 7014 2898
GERMANY	+49 69 2222 12283
FINLAND	+358 9 2319 5040
FRANCE	+33 1 7070 9622
ITALY	+39 02 3604 9211
LATAM	+1 888 978 2840
MONACO	+377 9770 2424
NETHERLANDS	+31 20 713 9298
NEW ZEALAND	+0800 701 427
NORWAY	+47 2103 3400
SWEDEN	+46 8 5068 5493
SWITZERLAND	+41 4458 07181
SPAIN	+34 9380 01962
UNITED STATES & CANADA	+1 844 885 8417
UK	+44 207 340 0700